



West Linn – Wilsonville Schools

LONG RANGE PLANNING COMMITTEE

AGENDA

April 30, 2013

7:00 pm, District Administration Building-Board Room

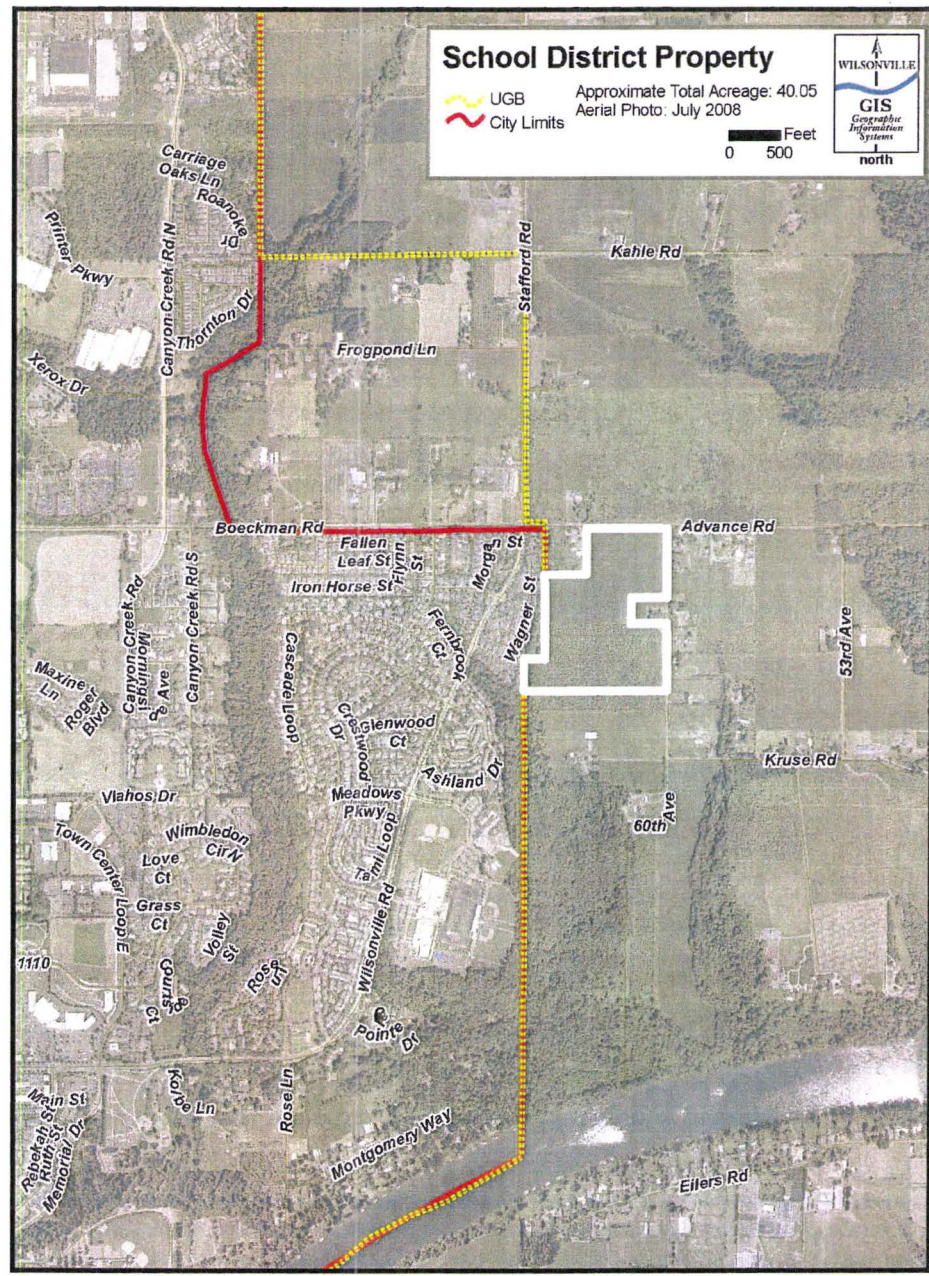
1. Check-In
2. LRPC new member introduction
 - a. Gretchen Katko-West Linn
3. Summer 2013 Bond Projects Tim Woodley
 - a. Willamette Primary Interior Project
 - i. Budget: \$1,205,000 Bid: \$1,017,567 (including const. contingency)
 - b. West Linn High Parking Lot Project
 - i. Budget: \$1,750,000 Bid: \$1,738,235 (including const. contingency)
4. Advance Road UGB/Annex-Update Keith Liden
5. Long Range Plan-Final Edition Keith Liden/Tim Woodley
 - a. Section A
 - i. Minor edits to program narrative(s)
 - b. Section B
 - i. Building Capacity Updates
 - c. Board Presentation May 6, 2013
6. Suggested Next Steps Tim Woodley
 - a. Technology Plan
 - b. Section C- capital project list
7. Art Tech High School Lease Information
 - a. Executed: April 25, 2013
 - b. Term: 4-year (July 1, 2013 to June 30, 2017)
8. Anything else?
9. Next Meeting? May 21, 2013

Next LRPC Meeting: May 21, 2013 at 7:00 pm Board Room

West Linn-Wilsonville School District - Urban Growth Boundary Amendment

The West Linn-Wilsonville School District has submitted an Urban Growth Boundary (UGB) Amendment application to Metro to bring a 40-acre property into the UGB. The site, commonly referred to the Advance Road property, is located on the south side of Advance Road, immediately east of the Wilsonville city limit. The purpose of the UGB amendment is to allow for the future construction of a new middle school, primary school, and a city of Wilsonville community park.

Vicinity Map



Anticipating future enrollment growth, the district purchased the property in 2003. To compliment the proposed primary and middle schools, the district and city agreed to incorporate a 10-acre city park as part of the future development of the property. The district and city have a long history of co-locating school and park facilities to obtain the maximum benefit for the community and using land and financial resources efficiently. The future 10-acre park site on the Advance Road property was exchanged to the city for a comparable city-owned property, which now accommodates the Lowrie Primary School in Villebois.

The district and city jointly developed a concept plan for the site, but funding is not currently available to construct any school or city park facilities. The purpose of bringing the site into the UGB is to position the property for annexation and eventual development in the city of Wilsonville. The district must gain approval of a school bond before any school facilities may be built on the property.

Concept Site Master Plan

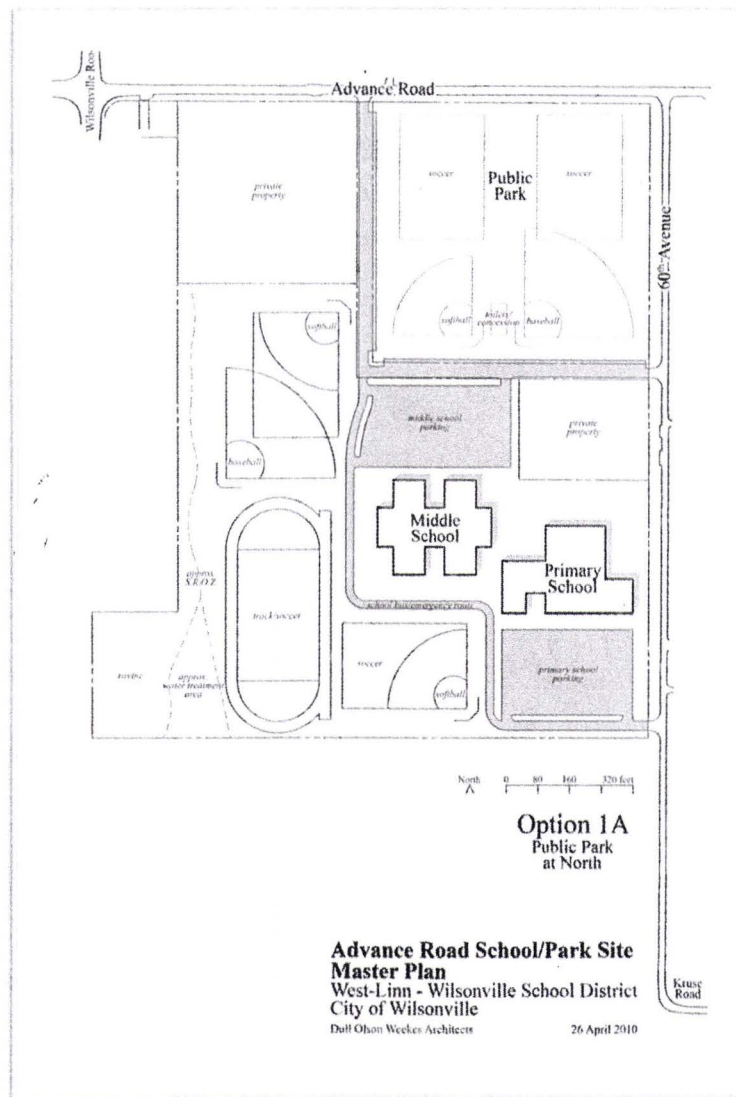


Table 6
2012 SCHOOL CAPACITY & ENROLLMENT FORECAST

SCHOOL	CAPACITY		ENROLLMENT			PROJECTIONS*				
	2013	2015	2010	2011	2012	2013	2014	2015	2016	2017
PRIMARY										
Boeckman	479	457	640	631	555	549	532	511	496	493
Boones Ferry	689	645	805	823	531	587	607	601	613	626
Lowrie	476	432	0	0	407	496	598	665	716	743
Wilsonville Subtotal			1,445	1,454	1,493	1,633	1,738	1,777	1,824	1,863
WV Available Capacity	1,644	1,534			151	11	-94	-243	-290	-329
Bolton	363	341	332	269	278	256	250	232	214	202
Cedaroak	407	385	415	413	318	284	283	275	270	257
Stafford	501	479	543	525	450	358	366	366	364	370
Sunset	432	410	427	409	285	394	375	368	346	343
Willamette	501	479	601	609	510	542	542	550	532	528
Trillium Creek	498	454	0	0	458	433	445	450	441	446
West Linn Subtotal			2,318	2,225	2,299	2,266	2,260	2,239	2,167	2,145
WL Available Capacity	2,702	2,548			403	436	442	309	381	403
Subtotal			3,763	3,679	3,792	3,899	3,997	4,016	3,992	4,008
Total Available Capacity (K-5)**	4,346	4,082			554	447	349	66	90	74
MIDDLE										
Wood			697	706	737	769	818	868	943	990
Avail. Capacity	640	640			-97	-129	-178	-228	-303	-350
Athey Creek			566	602	607	534	515	481	495	485
Avail. Capacity	624	624			17	90	109	143	129	139
Rosemont Ridge			695	692	684	732	729	719	721	716
Avail. Capacity	668	668			-16	-64	-61	-51	-53	-48
Subtotal			1,958	2,000	2,028	2,034	2,062	2,068	2,159	2,191
Total Available Capacity (6-8)	1,932	1,932			-96	-102	-130	-136	-227	-259
HIGH										
Wilsonville	1,472	1,472	1,049	1,084	1,121	1,123	1,133	1,182	1,164	1,203
West Linn	1,748	1,748	1,548	1,506	1,553	1,499	1,472	1,509	1,471	1,449
Art Tech	86	86	77	86	105	105	105	105	105	105
Subtotal			2,674	2,676	2,779	2,727	2,710	2,795	2,740	2,756
Total Available Capacity (9-12)	3,306	3,306			527	579	596	511	566	550
TOTAL			8,395	8,355	8,599	8,660	8,770	8,880	8,891	8,956
Total Available Capacity (K-12)	9,584	9,320			985	924	814	704	694	628

* Projections assume that current school attendance areas remain unchanged.

** Assumes full-day kindergarten beginning in 2015.