



WLWV Community Listening Session

November 17, 2020

Gender-Neutral Restrooms





Purpose and Agenda

- I. Clarify key information
 - Scope of project, goals for project
 - Legal requirements for public school districts
 - Process for input
 - What we've heard so far

- II. Questions and feedback
 - Use the chat for questions and feedback
 - Share and respond to questions
 - Provide individual feedback

- III. Next steps



Scope of Project

1. ***Gender-neutral single occupancy restrooms are being planned only for new spaces being added to schools where restrooms are already included in the projects.***
 - The new spaces were determined through a Capital Bond Summit in February 2019, with parent representatives from all schools.
 - Bond Projects underway where restrooms are needed include:
 - ★ West Linn HS Stadium and Parking Expansion
 - ★ Wilsonville HS Performing Arts Center
 - ★ Wood MS Office, Outdoor Concession, Maker-Space Remodel
 - ★ New Athey Creek Middle School at Dollar Street
2. ***Existing restrooms that are not part of these projects in schools and facilities remain unchanged.***
3. ***In the new Athey Creek MS, all restrooms can have single occupancy stalls but all do not need to be designated as gender neutral. All school restrooms currently have single occupancy stalls.***



Goals

1. When restrooms are added as part of a remodel or to a new school, design plans meet legal guidelines for public schools and contribute to safe and welcoming schools.
2. Restroom designs emphasize the well being of all students and contribute to all students belonging and school safety.
3. Input from students, parents and staff are used to design all school spaces, including restrooms.



U.S. Departments of Justice and Education
Oregon Department of Education



From national guidance in May, 2016:

*“A school may provide separate facilities on the basis of sex, but must allow transgender students access to such facilities consistent with their gender identity. **A school may not require transgender students to use facilities inconsistent with their gender identity or to use individual-user facilities when other students are not required to do so. A school may, however, make individual-user options available to all students who voluntarily seek additional privacy.**”*

Oregon’s Governor issued this statement in February, 2017:

“Oregon will expect schools to follow the Oregon Guidance document for transgender students. Regardless of federal guidance, Oregon law continues to provide protections for all students, including transgender students.”



Oregon Law	WLWV Beliefs
<p>2017 – Oregon adopts U.S. Department of Education Guidance, Governor affirms it as the basis for Oregon school policy. School districts are to set policy and update restrooms based on these recommendations: <i>Many students seek additional privacy in school restrooms and locker rooms. Some schools have provided students increased privacy by making adjustments to sex-segregated facilities or providing all students with access to alternative facilities.</i></p>	<p>There should be a restroom choice for all students without any one student or few students feeling stigmatized or marginalized because of their choice or need. When all students feel safe, welcome and included it is good for the overall culture and climate of a school.</p>
<p>June 2020 – The LGBTQ2SIA+ Student Success Plan was issued to further define the equity initiatives within the Student Success Act, which was signed into law in May, 2019. <i>The Student Success Plan includes specific strategies and actions, including: 1.) School administrators and students have knowledge of requirements regarding laws related to equal access to restroom and changing room facilities. 2.) Provide students with access to all-gender restrooms and changing facilities without barriers to use such as time-limited access, required keys, or long-distances to travel.</i></p>	<p>Inclusive and equitable practices extend to all students and differences based on learning, race, gender, gender-identity and sexual orientation, language, culture, and economics. The district’s commitment to inclusive and equitable practices means all students have access to academic programs, co-curricular activities and use of facilities. Access should be built into programs and facilities so individuals or groups of students can participate without having separate expectations, activities, or facilities.</p>



Process

Shared initial design possibilities with Long Range Planning Committee
October 28, 2020

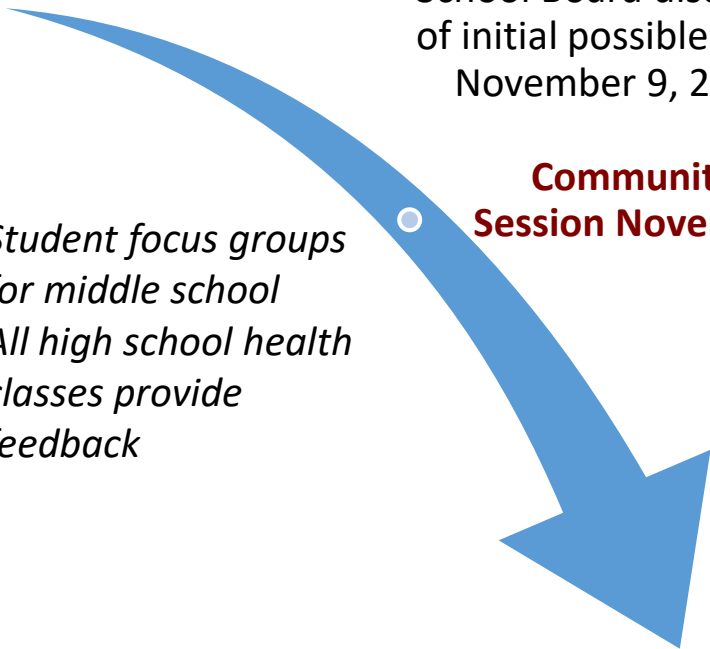
School Board discussion of initial possible designs
November 9, 2020

Community Listening Session November 17, 2020

- *Student focus groups for middle school*
- *All high school health classes provide feedback*

Receive and use public comments from students, parents and staff to influence design and overall plan for restrooms
August 2020 – December 4, 2020

Use all community, LRPC and School Board feedback to design gender-neutral restrooms for Capital Bond Projects.





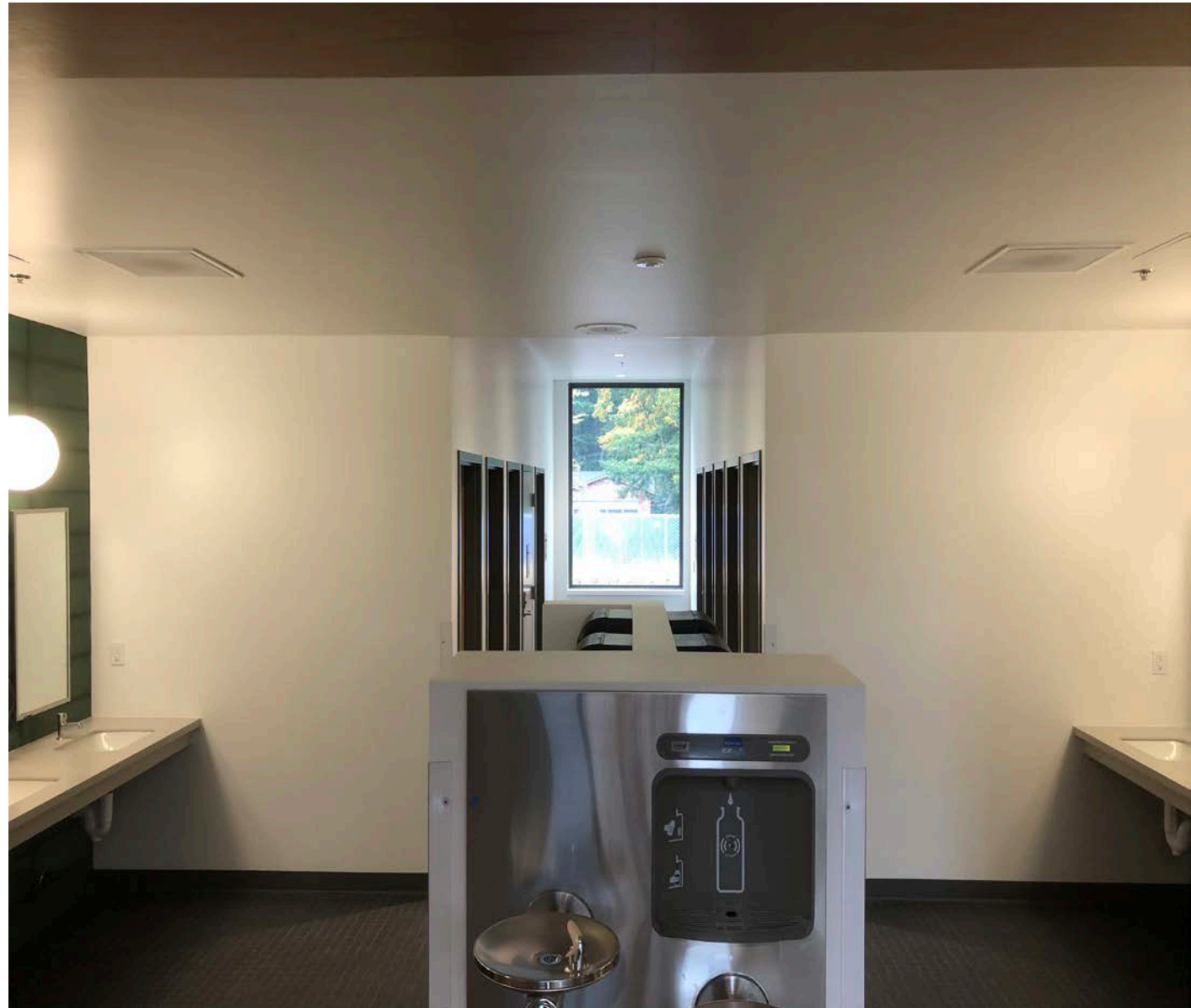
Feedback and Changes So Far

What We Heard	Changes and Clarifications for Plan and Design
<p>Not all students and parents prefer use of gender neutral restrooms at school.</p>	<p>Not all restrooms in any school will be gender neutral. Additions are part of bond projects. New single stall restrooms with hand washing sinks outside of the stalls can be gender assigned so there are traditional and gender neutral restrooms within the school.</p>
<p>Single occupancy stalls can encourage unsafe behavior.</p>	<p>Increase lines of sight from hallways and keep the size of stalls as small as possible, design doors to allow some visibility of occupancy.</p>
<p>The new restrooms that are part of projects where the community will use the space outside of school hours raise concerns about adults and students using gender neutral facilities.</p>	<p>There can be full single occupancy restrooms (ADA) that are not enclosed within a larger space and traditional gender assigned restrooms for the projects where restrooms will be used outside of the school day. A gender neutral restroom can then be added elsewhere in the school so it provides an option along with traditional restrooms.</p>



Design Priorities

- Ensure user privacy does not compromise school safety.
- Ensure lines of sight for entrance and exit.
- Design supports supervision.
- Within a school, single occupancy restrooms can be assigned by gender or be gender neutral so there are both options.





Considerations for Restroom Stalls

- Size of stall
- Type of door
- Space at bottom of door
- Visibility of stalls from entrance
- Number of stalls within restroom



Options Discussed

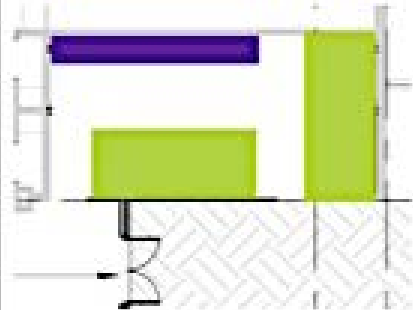


Legend

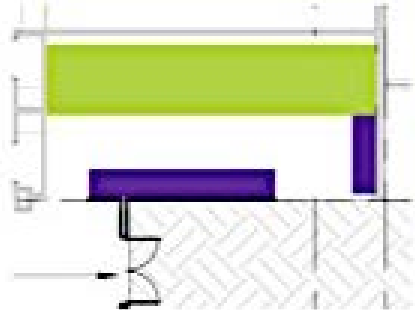
- Toilet
- Lavatory

All options have same quantities of toilets and lavatories

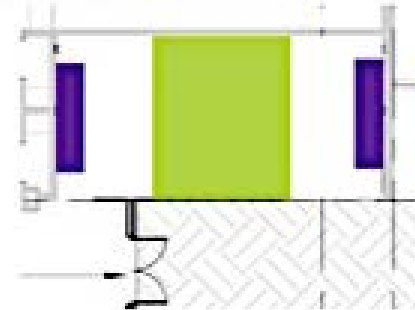
Single Occupant Restroom



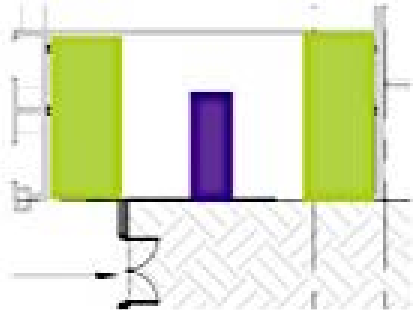
Option A
Most privacy from hallway
Sinks visible from hallway



Option B
Some privacy from hallway
Toilet rooms visible from hallway



Option C
Completely visible from hallway
Two separate toilet room areas



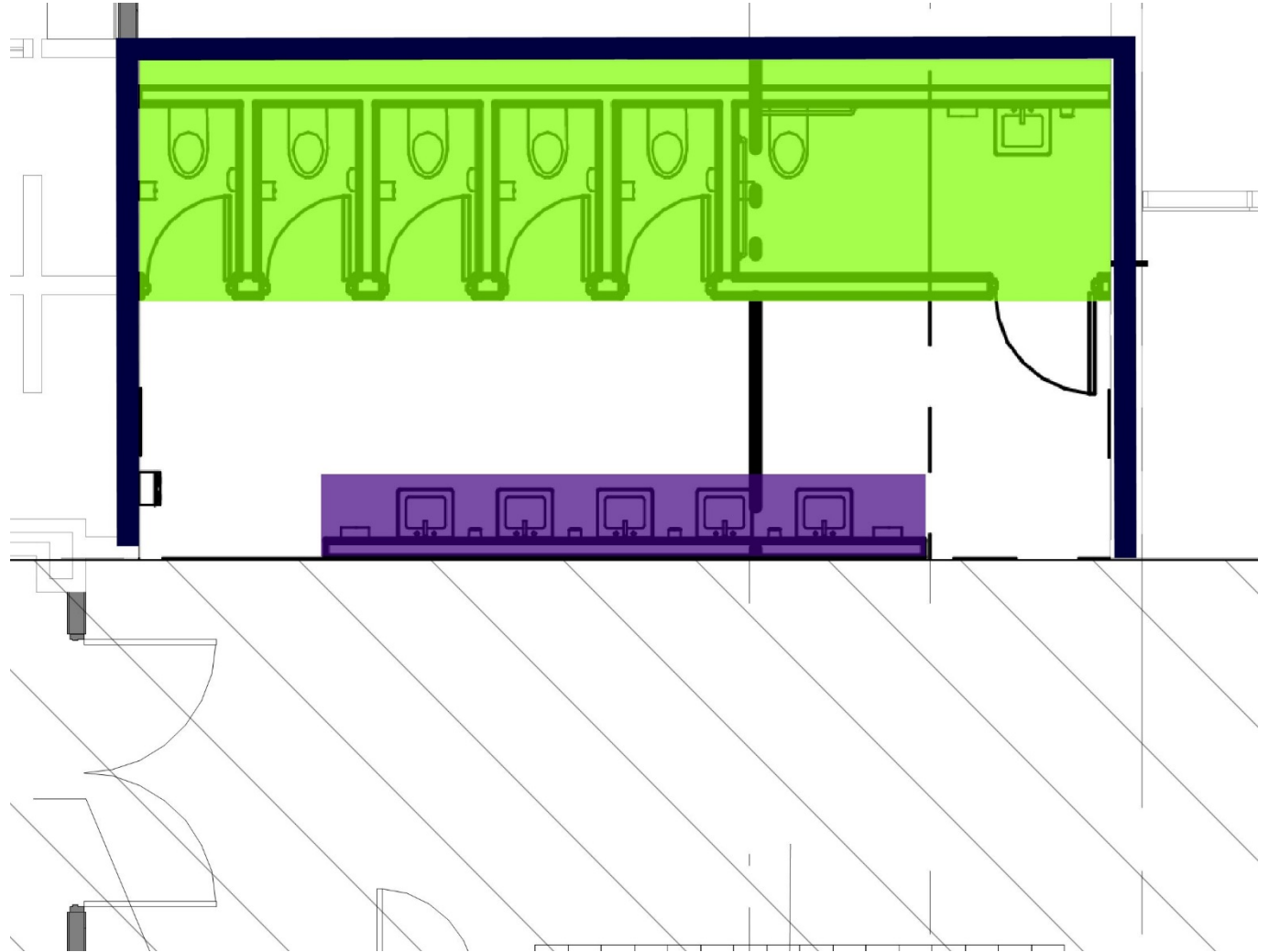
Option D
Completely visible from hallway
There could be a wall between the sinks, or it could be open with no wall and a joint counter



Option E

Based on feedback:

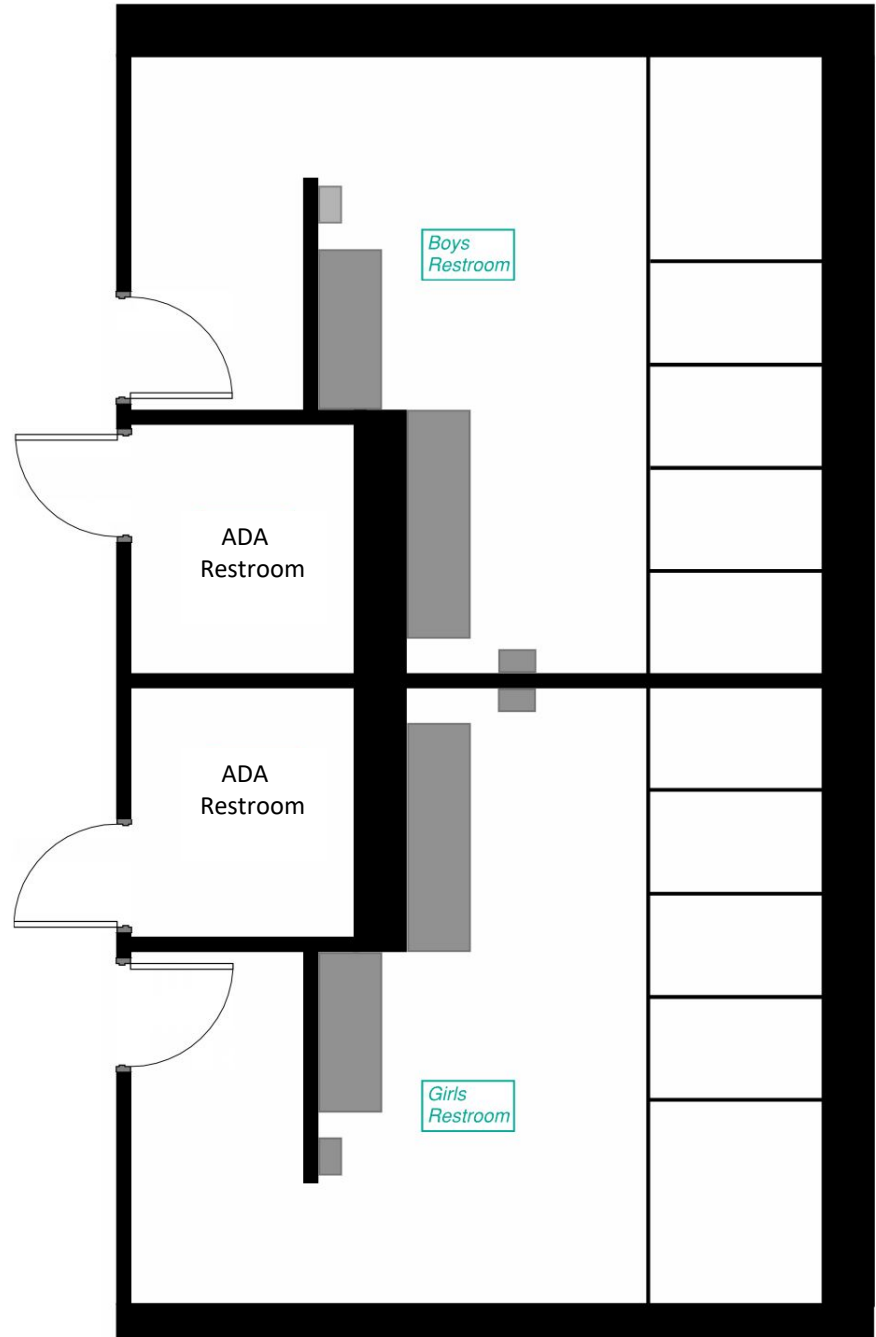
- Fewer stalls
- Increased visibility from hallway
- Partial wall
- Full restroom (ADA) separate from other stalls





Updated Draft for a Restroom Used During the School Day and for Community Events:

- Visible supervision of children entering restrooms
- Gender assigned
- Placement of single ADA restroom units so they are not inside the restroom facility





Questions and Feedback

Please enter your questions in the Q & A. We will give you a few minutes, then read and group questions to read aloud and answer.

Please also give us your individual feedback, using this [online form](https://forms.gle/v4P66qXdTimTD2WC9) to respond: <https://forms.gle/v4P66qXdTimTD2WC9>

1. What do you most want us to consider in providing restrooms that contribute to safe and welcoming schools for all students and meet legal guidelines?
2. What are your ideas about the design of the restrooms?
(Examples: placement and size of individual stalls, entrance/exit, placement of sink, openness to hallways)
3. What further questions do you have?



Next Steps

1. Receive questions and feedback from this evening along with all public comments and input from students, parents and staff until December 4, 2020.
2. Use feedback to make adjustments to designs for restrooms and their placement in the schools.
3. Provide an update about restroom plans at the January 11 WLWV School Board Meeting.