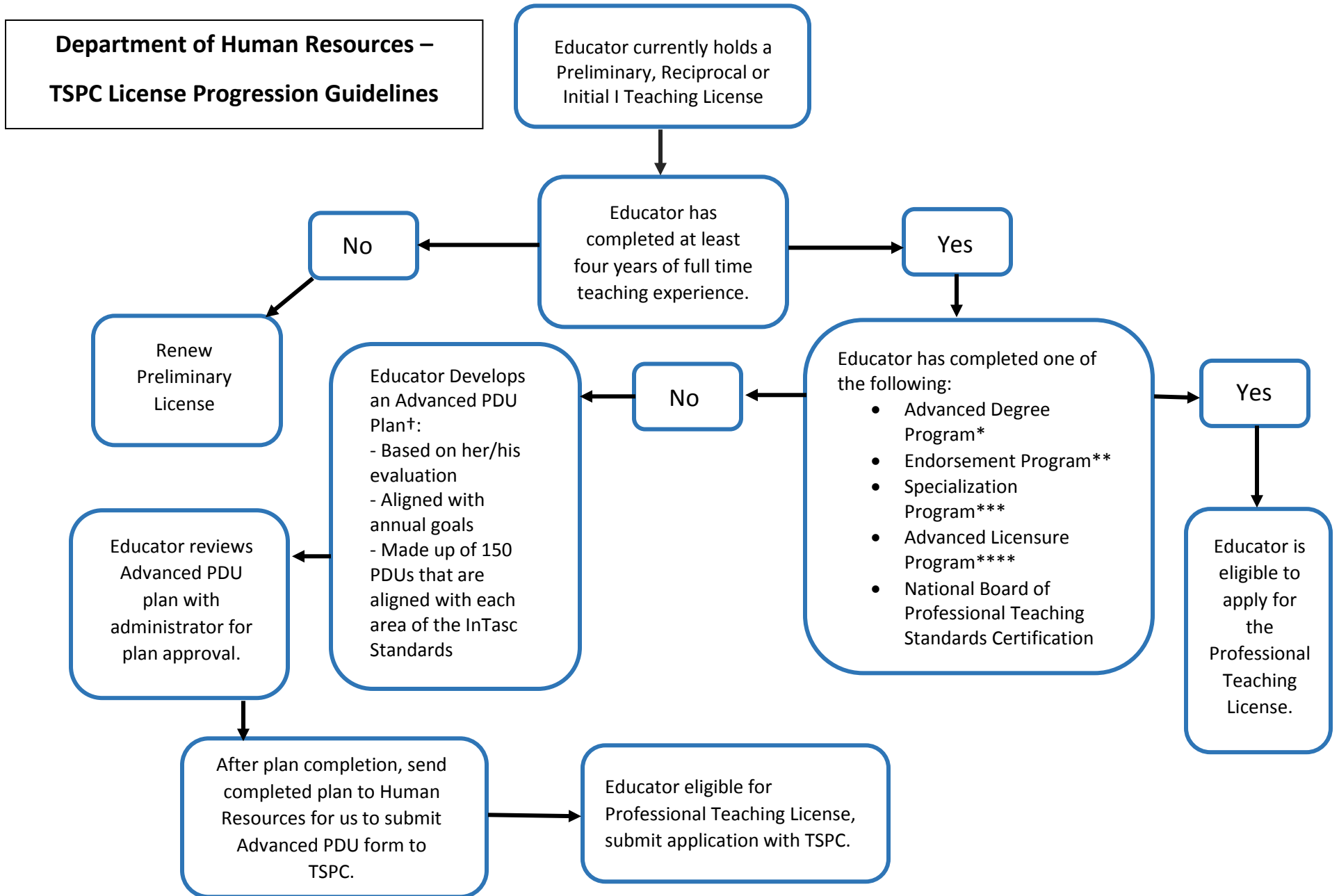




## WEST LINN - WILSONVILLE SCHOOL DISTRICT

### Department of Human Resources – TSPC License Progression Guidelines





## WEST LINN - WILSONVILLE SCHOOL DISTRICT

### Department of Human Resources

**\*Advanced Degree Program** – Any advanced degree program reasonably related to improving an educator’s teaching skills. For example, a teacher newly earns a Master’s degree in their content area. A teacher earns a M.ED in curriculum and instruction, neuro-education, or education leadership. A teacher newly earns a doctorate in their subject matter. The advanced degree must be completed after the educator receive their first non-provisional teaching license.

**\*\*Endorsement Program** – Complete a Commission-approved program to add new subject matter areas: ESOL, Music, Art, Reading, etc.

**\*\*\*Specialization Program** – Complete a program to add new specialized areas: Adaptive PE, Early Childhood, TAG, Dual Language, Autism, etc.

**\*\*\*\*Advanced Licensure Program** – Teacher Leader, School Counselor, School Psychology, School Social Worker, Administrator, etc.

**†Advanced PDU Plan** - Advanced PDUs is a district-centered program option for moving from the Preliminary Teaching License to the Professional Teaching License. The Advanced PDUs district program is called the Advanced Professional Development Program.

The Advanced Professional Development Program is:

- Developed jointly with the applicant and employing district or public school
- Based on the employing school district evaluations of the applicant
- Aligned with annual performance goals of the applicant
- Specifically tailored to advance the applicant from novice to professional skill level
- Made up of at least 150 Professional Development Units (PDUs) that are aligned to the InTasc Standards (*see attachment*)

<https://www.oregon.gov/tspc/Pages/first-time-license.aspx>

<https://www.oregon.gov/tspc/Pages/PDUs-Continuing.aspx>