

# WLWV Online Program Family Night

A Q1 Wrap-Up.  
We are so happy to see you!



# Your Team

**Dr. Mayra  
Gómez**  
Director

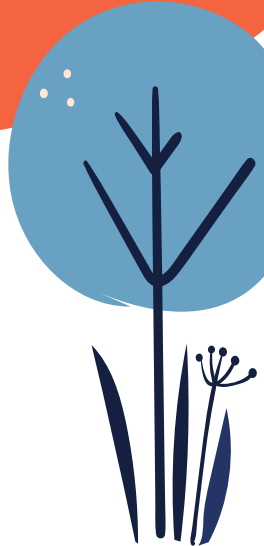


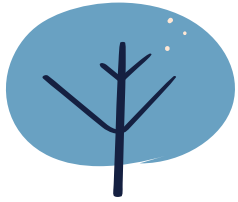
**Brittany Bucholz**  
Secondary Schools Social  
Worker



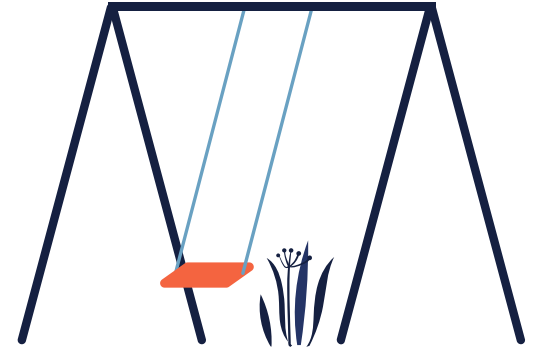
**Kimberly Gwin**

Counselor for 6, 7  
& 8th grade.





# Agenda



Tonight's focus is to provide families with resources needed in order to:

- Finish Quarter 1 (Q1) and know where to turn and who to turn to for support.
- Ensure your role as a Learning Coach is moving smoothly
- Effectively plan for Quarter 2 (Q2) and potentially adjust what students previously forecasted for.
- Meet our District's Secondary Schools Social Worker who can assist our families in a variety of ways.



All will be discussed with our student and family's health and happiness in mind.

# Important Upcoming Dates

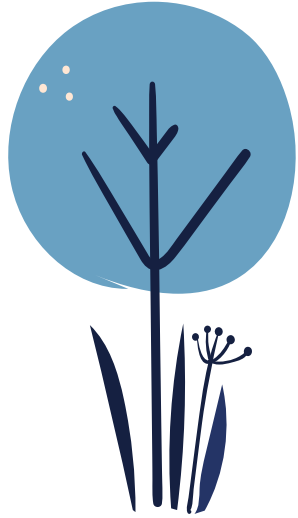
**Quarter 1 ends** on Nov. 13th

**Teacher Grading Day** is November 16th  
Students do not have school on November 16th.

**Quarter 2 begins** on Nov. 17th

**Thanksgiving Break** is Nov. 23rd - Nov. 27th  
Students do not have school during this week

The remainder of the school year will follow the WLWV district calendar.





## Guiding sentiments for the evening.



### Learning Online

Did you know that the Online Middle School Program has 430 students in it?! We will be in this online platform all year. While our students and families miss many elements of attending school in the physical sense, we're so grateful to remain a part of your student's educational journey.



### Shared Experience

We invite you to carve out time to celebrate YOU and your STUDENT. We're here to celebrate our time together this quarter and acknowledge that each student and family keep at this despite the many challenges presented each day.



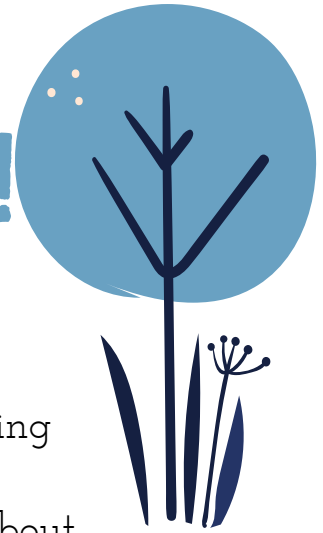


# Q1, WE'RE JUST ABOUT DONE!

---

As we approach the final weeks of Q1, please:

- Check your student's Class Connect and log into your Learning Coach account.
  - Directly email your student's teacher for information about student progress if you have questions.
- Classes that are two quarters will occur in alternating quarters.
- Families will have access to their Q2 courses in Parent/StudentVue by Monday, Nov. 9th.
  - Request for elective options will be discussed in a moment.
- All students will stay in their mathematics course for the full year.



# Common Questions asked by students and families regarding Q1

**What is the final day  
to submit work?**

Friday, Nov. 13th  
Students should submit their  
assignments as soon as  
possible.

If you need assistance, contact  
your student's teacher.



**Will I have the same  
teacher(s) in the later  
Quarters?**

Yes!  
Homeroom teachers and core  
teachers remain the same  
every quarter.



**What do middle  
school grades look  
like?**



Middle School grades are issued by  
teachers; not the FuelEd reporting. The  
grading system for all middle schools in the  
district is as follows:

**A** (90%+), **B** (80-89%), **C** (70%-79%)

**Not Yet Meet/NYM** indicates student is  
making progress towards learning target  
and grade can be changed.

**No Pass/NP** indicates that the student has  
demonstrated minimal progress towards  
learning targets within the provided time  
frame.



# Tips for Learning Coaches

---

- Prepare a daily schedule.
  - Your student's Class Connect page shows the daily schedule of teacher's live lessons, small groups and more.
- Ensure students are attending live sessions
- Check email daily
- Review student's work and progress for each course
- Ask teachers for help when needed

**If you have questions about your Learning Coach account,  
please email Julie Lane: [lanej@wlwv.k12.or.us](mailto:lanej@wlwv.k12.or.us)**







## How does one best prep for Q2?

**3 classes are required per quarter.** Homeroom is not considered a class that fulfills this requirement.

**ALL middle school students are required to complete:**

4 quarters of Math

2 quarters of ELA, Social Studies, and Science

1 quarter of Wellness

1 quarter of World Language (Note that students have the option to take World Language for more than one quarter)

**Electives are optional but highly encouraged**



# Sample Schedule: A

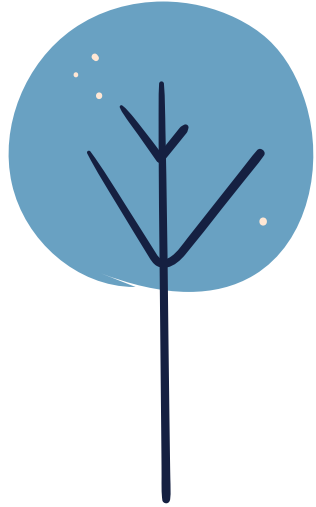
Sample includes all required coursework.

Quarter 1	Quarter 2	Quarter 3	Quarter 4
Math	Math	Math	Math
E.L.A.	Social Studies	E.L.A.	Social Studies
Wellness	Science	Spanish	Science

# Sample Schedule: B

Sample includes all required coursework + choice electives

Quarter 1	Quarter 2	Quarter 3	Quarter 4
Math	Math	Math	Math
E.L.A.	Social Studies	E.L.A.	Social Studies
Wellness	Science	Spanish	Science
Computer Literacy	Journalism	Photography	World Art





# Let's help our students find academic peace in the OP.

Have the conversation. Feel free to use these guiding questions when planning ahead with your student.

Have we checked in lately? How do you think/believe you are doing in school? How are you feeling and is there anything we want to adjust for the future in the OP?

Are the core classes keeping you busy? Not busy enough?



Do we have the time and balance to schedule in more than 3 classes this next quarter? How do we know this?

Do we want to attend more live sessions? Small groups? Tutoring in Class Connect with Ms. K?

Want to update what your student forecasted for? No problem. Hover over your student's home school name to be redirected to an elective request form.

**MERIDIAN CREEK | ROSEMONT RIDGE | ATHEY CREEK | INZA WOOD**



# You're not alone in this.

...but we recognize it sure can feel that way at times.  
Secondary School Social Worker, Brittany Bucholz  
[bucholzb@wlwv.k12.or.us](mailto:bucholzb@wlwv.k12.or.us)  
Text: 503-208-4681 Call: 503-673-7818



Supports all families by:

- Navigating insurance to find potential mental health professionals who are a good fit
- Resource connections for emotional/mental health supports & tangible/cash resources
  - Community Bulletin Board
  - Community Resources
- Parent Information Nights
  - Recorded Anxiety 101 Webinar
  - Family Wellness at Home
    - 11/17/20 3:00-4:30 and will be recorded.



# Who do I contact?

## Program Questions & Concerns

Dr. Mayra Gómez  
Program Director  
gomezm@wlwv.k12.or.us

## Course Questions; pacing, assignment clarification, grade concerns, etc.

Teachers listed in  
student's ParentVue

## Student Engagement, Social-Emotional Support & Schedule-Change Requests

Kimberly Gwin, M.Ed  
School Counselor  
Gwink@wlwv.k12.or.us





# Closing Thoughts!



Does anyone have any questions?

