

What is Safe Routes to School?

A successful Safe Routes to School Program is a partnership between city and county agencies, schools, community organizations, and neighborhoods that work together to create opportunities to make walking and biking to school and throughout the community fun, easy, safe and healthy for all students and their families. Schools and communities have the best chance of success when they combine expertise, resources and program elements that consider the "5 E's of Safe Routes to School": Encouragement, Education, Enforcement, Engineering and Evaluation.

<http://www.sustainableschools.org/oregon saferoutestoschoolhome>

Walk to School Day- October 3, 2012



City of
Wilsonville



City Hall
29799 SW Town Center Loop E
Wilsonville, OR 97070

For more detailed information please visit our website at
<http://wlv.schoolwires.net//Domain/14>

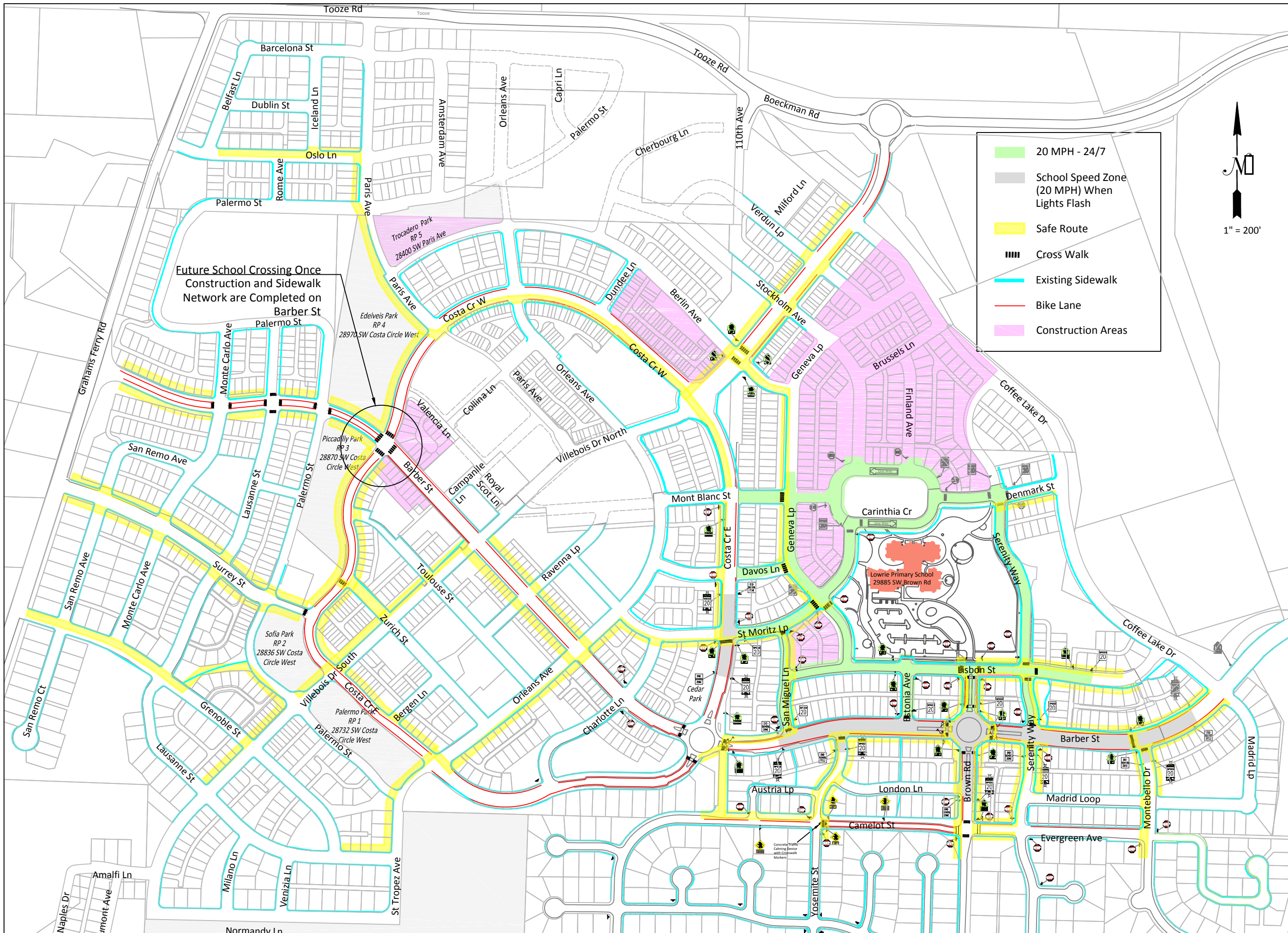


Lowrie Primary Safe Routes to School



Your walking and bicycling guide to getting
your children to school safely





- 20 MPH - 24/7
- School Speed Zone (20 MPH) When Lights Flash
- Safe Route
- Cross Walk
- Existing Sidewalk
- Bike Lane
- Construction Areas



Future School Crossing Once Construction and Sidewalk Network are Completed on Barber St

REVISIONS	
2 September 2016	###
19 December 2016	###
13 January 2017	###
4 May 2017	###

City of Wilsonville
 Engineering Department
 29799 SW Town Center Loop E
 Wilsonville, OR 97070
 Phone 503-682-4960

Date	4 May 2017
Scale	1" = 200'
Designed By	SA
Drawn By	SR
Checked By	###

Safe Routes to School
2017 Plan

CIP #	###
PROJECT #	###
SHEET #	1 of 1