

GREEN AND GOLD 1953

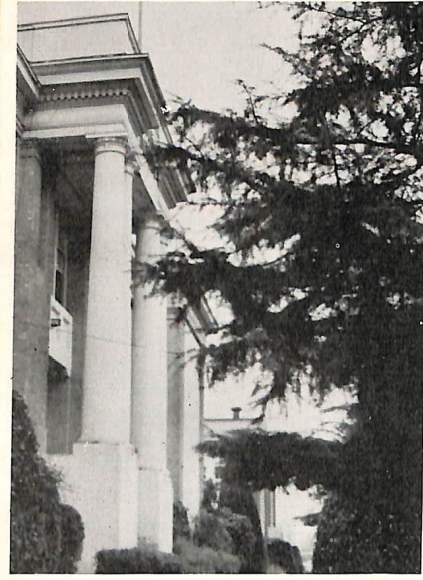
Hi Buzzy,
 for only one year, you
 were your a real swell kid
 keep that way, you'll find
 friends everywhere you go.
 Mamma's wif

Hi Buzzy,
 I don't know
 what you're doing
 but I hope you
 are doing well.
 I love you
 and hope you
 are happy.
 Love, Mom

Hi Buzzy,
 I think you're a pretty
 good egg. I hope
 you have fun with
 summer and don't
 eat too many worms.
 Love, Mom

To a
 swell and
 humorous person
 I wish you a
 lot of luck
 Jerry Van Winkle

Buzzy
 Good luck
 to a real swell
 kid and a fellow
 rowdy
 Bonnie Ryan



Green and Gold 1953

Published
by the
Associated Student Body
of
West Linn High School
West Linn, Oregon

STAFF

EDITOR
Opal Bradshaw

BUSINESS MANAGER
Nancy Herrmann

CLASS EDITOR
Veronica Papez

FEATURE EDITORS
Kay Granquist
Nadine Meador

ORGANIZATION EDITOR
Alyce Baker
Leah Main
Arlene Brooks

SPORTS EDITOR
Jack Schwartz

PHOTOGRAPHERS
Orman Woodard
—Eevern Schnell

Bugs Haag
"53"

To a swell kid
have lots of
luck through the
years.
Donna
Allinson

You are a swell kid
and a wonderful
classmate. I wish
you lots of luck
for success through
the coming years.
Dorothy Haynes

"Lots of Luck,"
Gerraine
Giles

Love and kisses
Herman
in memory of the
many happy days
we spent in each
other's arms
John Hooley

Dear Bugs,
I think you are
a great kid and I
have many times
in orchestra.

Bugs,
lots of luck to
a swell kid who
laughed and
remember the
"Hushy Lane" in
4th period study hall.

Hi Bugs,
I think you
are a swell kid
just like your big
brother. See you
this summer.
Dick Smith

Hi Bugs,
I hope you
are having a
great time
and I wish you
lots of luck
for the future.
Mike Love

Lots of Luck Bugs
Charles L. 1076

To a swell guy
loads of luck in
everything you do.
Sally
Jim Hermann

Mears wishing you a
lots of luck tell the mountain
picks a see's the solid driving
To a swell
guy
Marshall Groff

Charles Coins

To a swell kid
I have had a lot
fun with your brother
and I hope to have as
much with you.
Dave Coins

Bugs,
Good luck to you, (you
still remind me of your
kidmen from D.C.)
as always
Charles

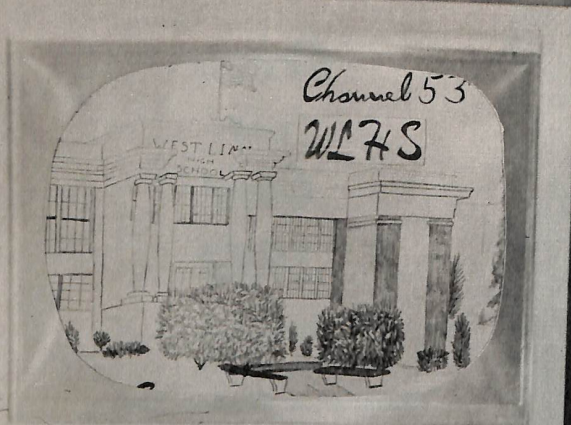
Bugs

To a swell kid in
algebra and lots of fun.
I have sure enjoyed knowing
you. See you next year
as a "Soph".

Doreen Sars

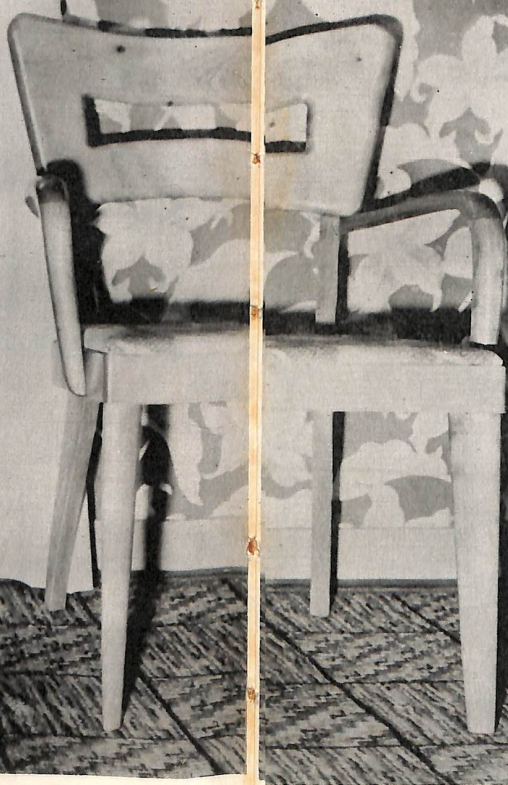
Lots of luck to a
nice guy.
Bugs -
Well, honey, I think
you're a real neat
guy. Don't roll those
beautiful eyes around
too much. Be good
and remember the
rare times we've had
together in algebra. I
wish you loads of luck
and I know if you
keep the same you'll
really go places.
"Ernie"

Bugs,
lots of luck
to a swell
guy. I've been
knowing
you these past
years.
Cullen
Wells



'52-'53 In Review

brought to you by the Associated Student Body of West Linn High School, West Linn, Oregon.



Green and Gold

Program Schedule

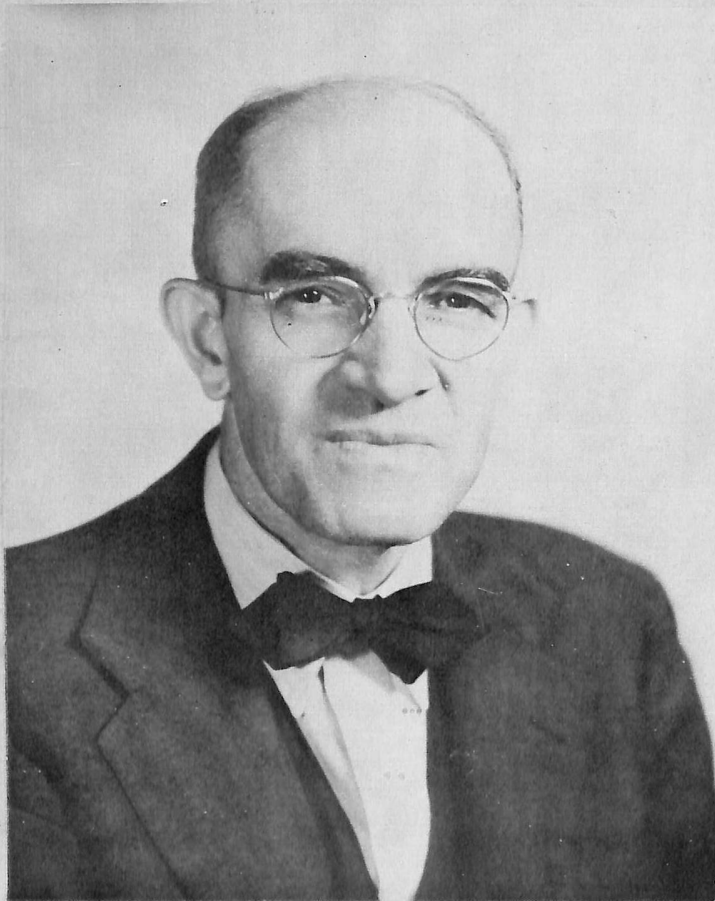
Cavalcade of Events	6
Panel of Experts	20
Meet the People	30
Performer's Playhouse	52
Parade of Sports	70
Let's go shopping	86

We wish to acknowledge the efforts of Mr. Shearer, Orman Woodward, and EeVern Schnell in providing so many pictures for our book, of Keith Renner for the lion sketches, and of Gary Welter for the sketch of the school.



Editor in Chief
Advisers

Opal Bradshaw
Marjorie Logsdon
Marjorie Pinkham



In Memorium . .

... To Herman Oppenlander

It seems fitting that we here at West Linn High School commemorate this book to our good friend, Mr. Herman Oppenlander. It is with sadness that we realize that physically he will be with us no longer; and yet it is with real satisfaction that we remember that his actions, deeds, and manner of doing things have been written, as though with an indelible pencil, into the memories and traditions of West Linn High School, there to remain for all time. We cherish his memory as an excellent teacher, a wonderful man, and a very loyal friend.

"BUILDING A BRIDGE FOR HIM"

An old man, going a lone highway,
Came at the evening, cold and gray,
To chasm vast and deep and wide,
Thru which was flowing a sullen tide.

The old man crossed in the twilight dim
The sullen stream had no fear for him;
But he turned when safe on the other side
And built a bridge to span the tide.

"Old man," said a fellow pilgrim near,
"You are wasting your strength with building here

Your journey will end with the ending day
You never again will pass this way;
You've crossed the chasm deep and wide,
Why build this bridge at eventide?"

The builder lifted his old gray head—
"Good friend, in the path I had come," he said
"There followeth after me today
A youth, whose feet must pass this way;
This chasm that has been nought for me,
To that fair-haired youth may a pitfall be:
He, too, must cross in the twilight dim—
Good friend, I am building this bridge for him."

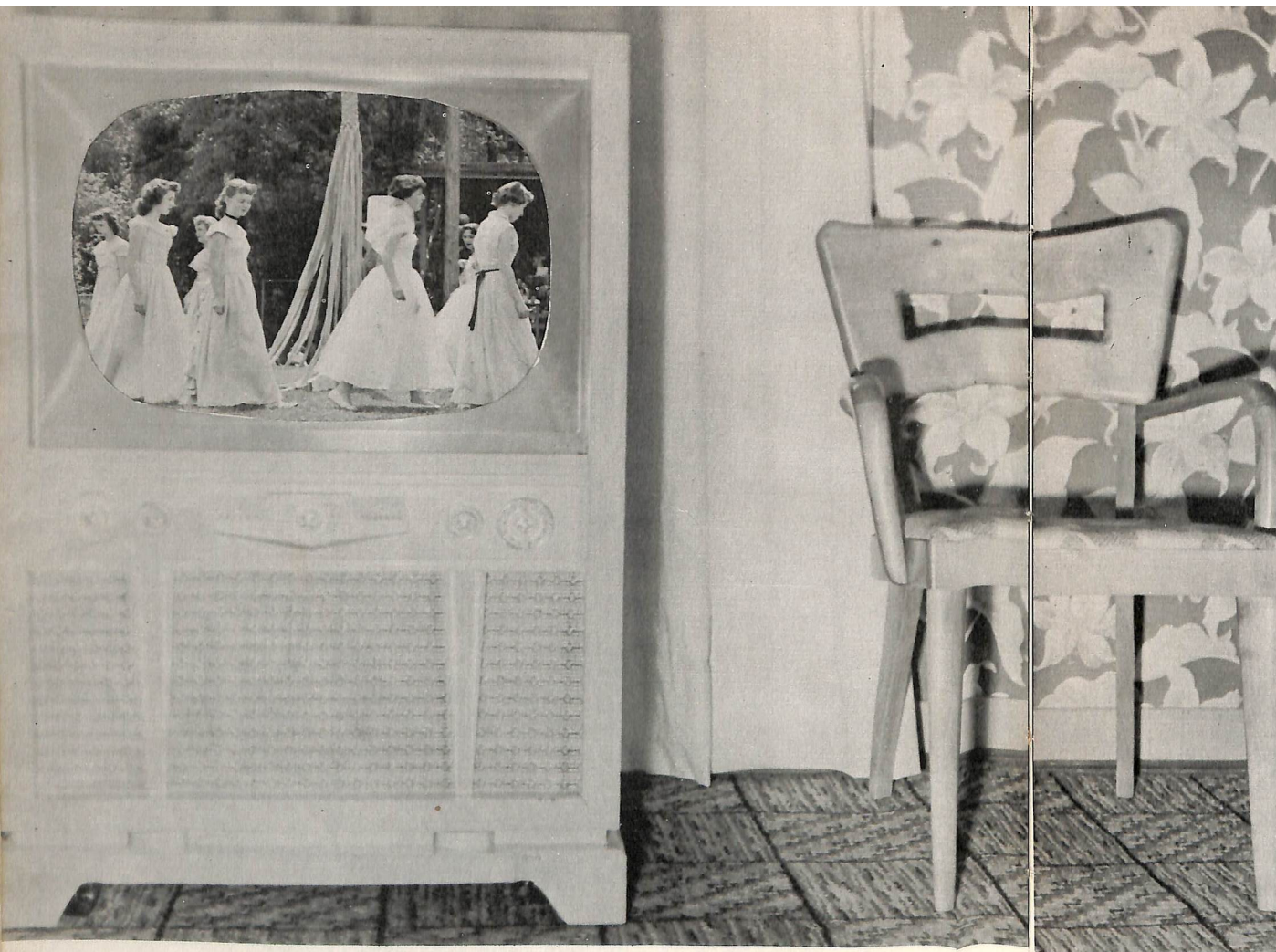
Mr. Oppenlander's life was like that—a life devoted to the service of youth and his fellow man—never too busy to take time to help a youth. For the past 24 years he has been a most conscientious and dependable instructor, finding time, in addition to his academic duties, to supervise many activities for the students. Even during the last few years when we knew he was in a great deal of pain and discomfort did he ever shirk any of these duties and responsibilities. Never once did I ever hear him complain. Never once was he absent from his duty.

His life was a model of honesty and integrity. These two characteristics were uppermost in all of his actions.

Thirdly, his life was devoted to a love of God and his fellow men. Besides his home, his two main interests were his Church and his school. These two institutions are better because of his being there.

This year was to have been his 25th year with us. We were planning to honor him for these years of service sometime during this school year. We know however that he has gone to a reward far richer than that which we could bestow upon him; and we know that he has already heard the words—and we join in saying them—"Well done, Herman, well done."

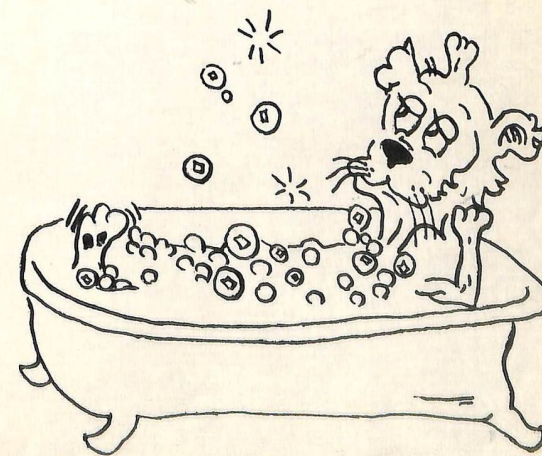
—Superintendent C. L. Tunnell



Cavalcade of Events

brings you a glimpse of the hub-bub of 1952-1953

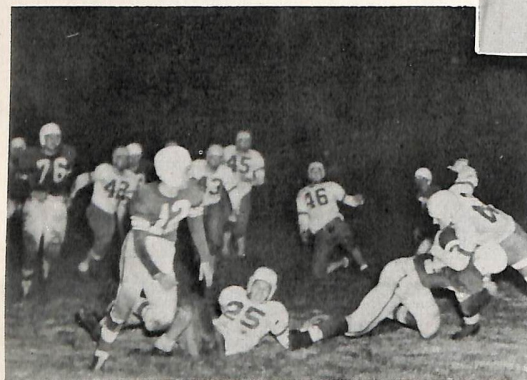
PRODUCER *Kay Granquist*
 PHOTOGRAPHER *Leah Main* *Camera Club*
 MAKE UP AND COPY *Nadine Meador*



Sharon Zirbel crowned Cliff Davis as Mr. Touchdown of the West Linn 1952-53 football season. This event was sponsored by the senior class.



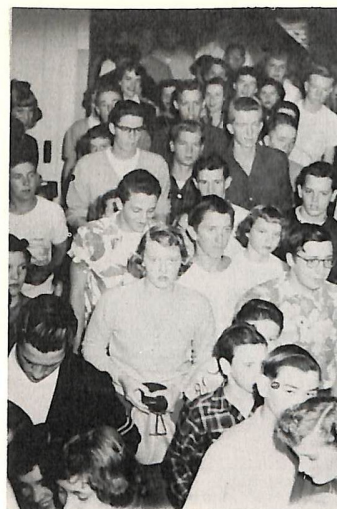
At our most exciting football game the fellows put up a good fight with the final score W. L. 6 — Hillsboro 7.



Mary Blinkhorn and Bill McIntosh last year's Doughnut King and Queen, crown Janice Bean and Don Eisele King and Queen of this year's contest sponsored by the F. H. A.

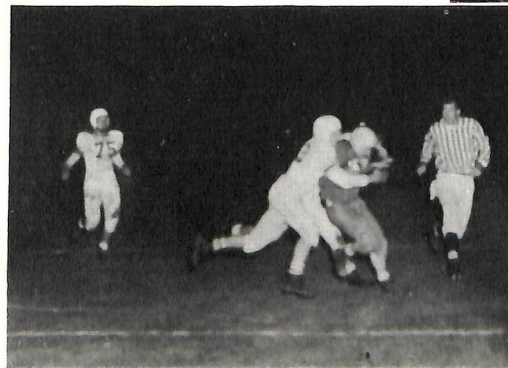


Last Spring we observed Coach Brown Day in honor of his 25 years of service.



Students jam halls on their way to the first pay assembly.

The day of the W.L.—O.C. football game began with the faculty members, football players, and Pep club of both schools enjoying the annual Breakfast sponsored by the Chamber of Commerce.



Tackles such as this one defeat us in the annual rivalry game with Oregon City.

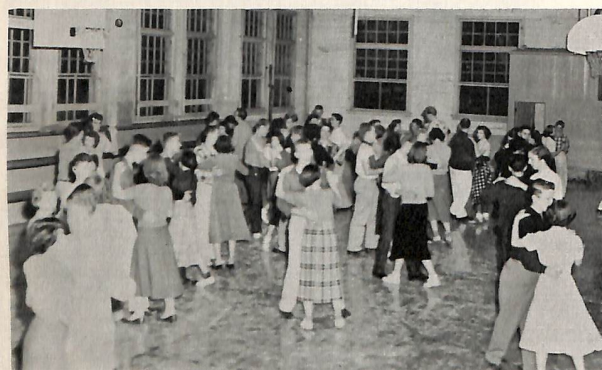


What have we here? The regular attire of the student?? No, just the G.A.A. girls being initiated.

Our first play of the year, "Night Must Fall," was presented by the student body.



The music department under the direction of Miss Brunner presented a very outstanding and colorful Christmas Cantata.



Fine turn out at the dancing classes shows tremendous interest on the part of the students.

After one week of voting by the students, Wanda Sather was elected Basketball Queen. Here she is being crowned while the princesses look on.



"Not so many!" was the frequent comment from the girls during "Lug Day", sponsored by the Girls' League in October.

Here we see a clever barber shop pantomime, one of the many entertaining acts presented in the Crescendo Club's "Talent Show."



10



Who are these charming individuals? They're a few of the Honor Society initiates posing for the cameraman.



After a successful season of placing second in the league, the Lions were downed by the Molalla Indians at the district play-off by the score of 44-47.



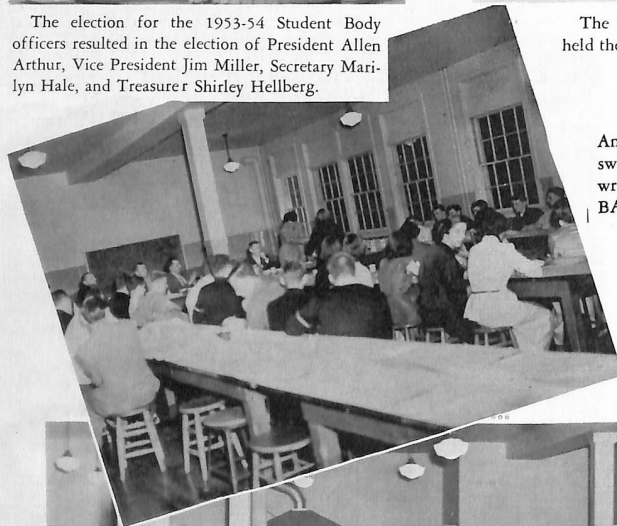
11



The election for the 1953-54 Student Body officers resulted in the election of President Allen Arthur, Vice President Jim Miller, Secretary Marilyn Hale, and Treasurer Shirley Hellberg.

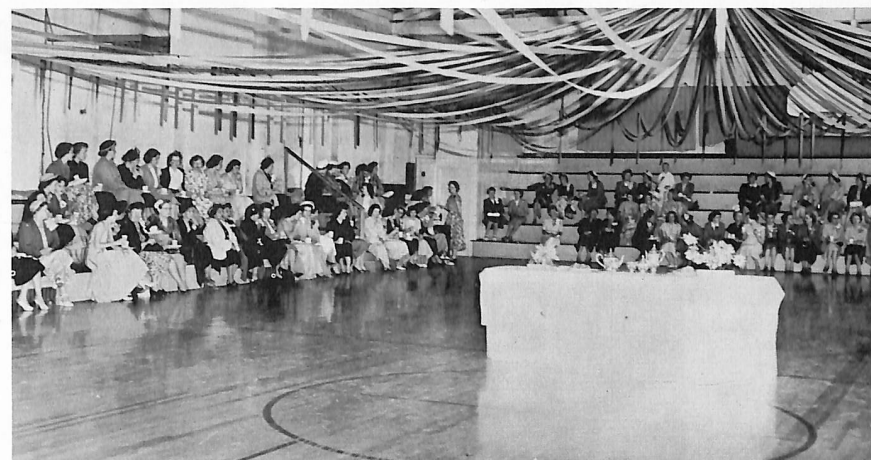


The Senior Class Play, "The Curious Savage", held the spotlight as a truly big hit.



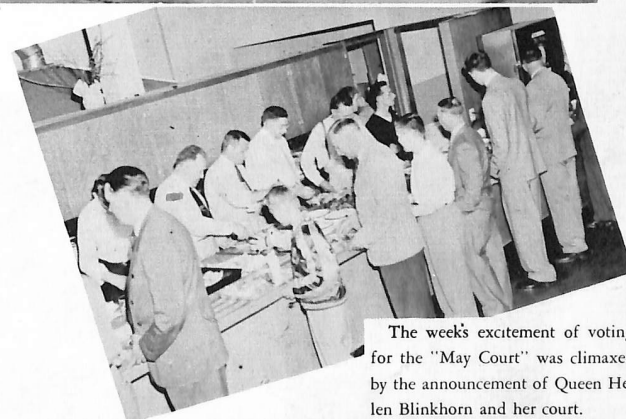
Annual awards were presented to swimmers, basketball players and wrestlers at the LETTERMAN'S BANQUET.

The girls and their dads kept a date with one another to attend the tasty, as well as entertaining annual Father and Daughter Banquet sponsored by the Girls' League.



A style show and tea with cookies highlighted the annual "Mother and Daughter Tea" sponsored by the Girls' League.

The fellows and their dads served themselves at the yearly Father and Son Banquet sponsored by the Boys' Club.



Dreamy formals, the girls' best beaux, and romantic music comprised the superb setting for this year's sensational Junior Prom.

The week's excitement of voting for the "May Court" was climaxed by the announcement of Queen Helen Blinkhorn and her court.



Students Gain



HENRY KILMER
Class History
Elks Award



PAT MILLIKEN
Class Will



KAY GRANQUIST
D. A. R. Representative
Swimming



JANET BAUER
Valedictorian
Elks Award



BILL RHODES
Class Song



LAURIE FITZPATRICK
Most Inspirational Player
Alternate for Shrine Game

Recognition



MAUREEN MCRATH
Salutatorian



OPAL BRADSHAW
Class Prophecy



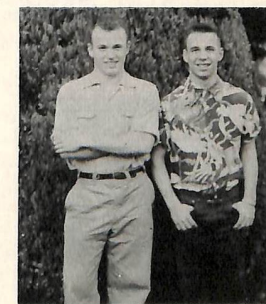
PAUL OPPENLANDER
Bausch Lomb Science Award



BERNELL FLATH
Speech Award



LARRY KROMLING
Class Poem



ALLEN ARTHUR
BILL ILLINGWORTH
Outstanding Wrestlers

Poll *Heralds*



BEST DRESSED
Allen Arthur
Janice Bean



MOST STUDIOUS
Janet Bauer
Eugene Corey



WITTIEST
Kernan Bagley
Janice Carter



MOST PEP
Gary Welter
Donna Sharbuno



BEST LOOKING
Barbara Saxhaug
Bill McIntosh



BEST DANCERS
Gerry Williams
Larry Kromling

"53" *Who's Who*



BEST ATHLETES
Laurie Fitzpatrick
Kay Granquist



BIGGEST FLIRTS
Sue Coe
Bill O'Neill



MOST LIKELY TO SUCCEED
Pat Sharp
Edward Charman

FRIENDLIEST
Nadine Meador
Don Rasmussen



MOST SINCERE
Helen Blinkhorn
Keith Blue



MOST TALENTED
Pat Milliken
Bernell Flath

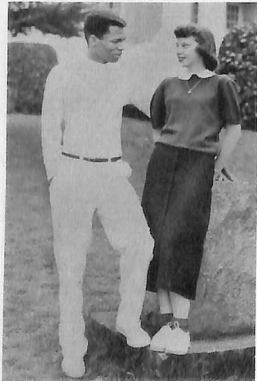
Poll Heralds



BEST DRESSED
Allen Arthur
Janice Bean



MOST STUDIOUS
Janet Bauer
Eugene Corey



WITTIEST
Kernan Bagley
Janice Carter



MOST PEP
Gary Welter
Donna Sharbuno



BEST LOOKING
Barbara Saxhaug
Bill McIntosh

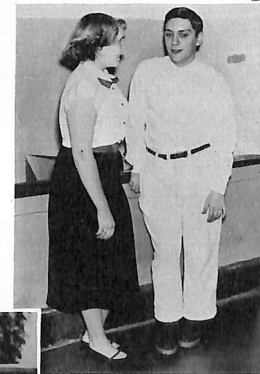


BEST DANCERS
Gerry Williams
Larry Kromling

"53" Who's Who



BEST ATHLETES
Laurie Fitzpatrick
Kay Granquist



BIGGEST FLIRTS
Sue Coe
Bill O'Neill



MOST LIKELY TO SUCCEED
Pat Sharp
Edward Charman

FRIENDLIEST
Nadine Meador
Don Rasmussen



MOST SINCERE
Helen Blinkhorn
Keith Blue



MOST TALENTED
Pat Milliken
Bernell Flath



Queen Helen IV

Queen, Court Welcome May at West Linn



Maid of Honor Shirley



Princess Shirley



Princess Delores



Princess Neva



Manager Larry Kromling



Princess Marlene



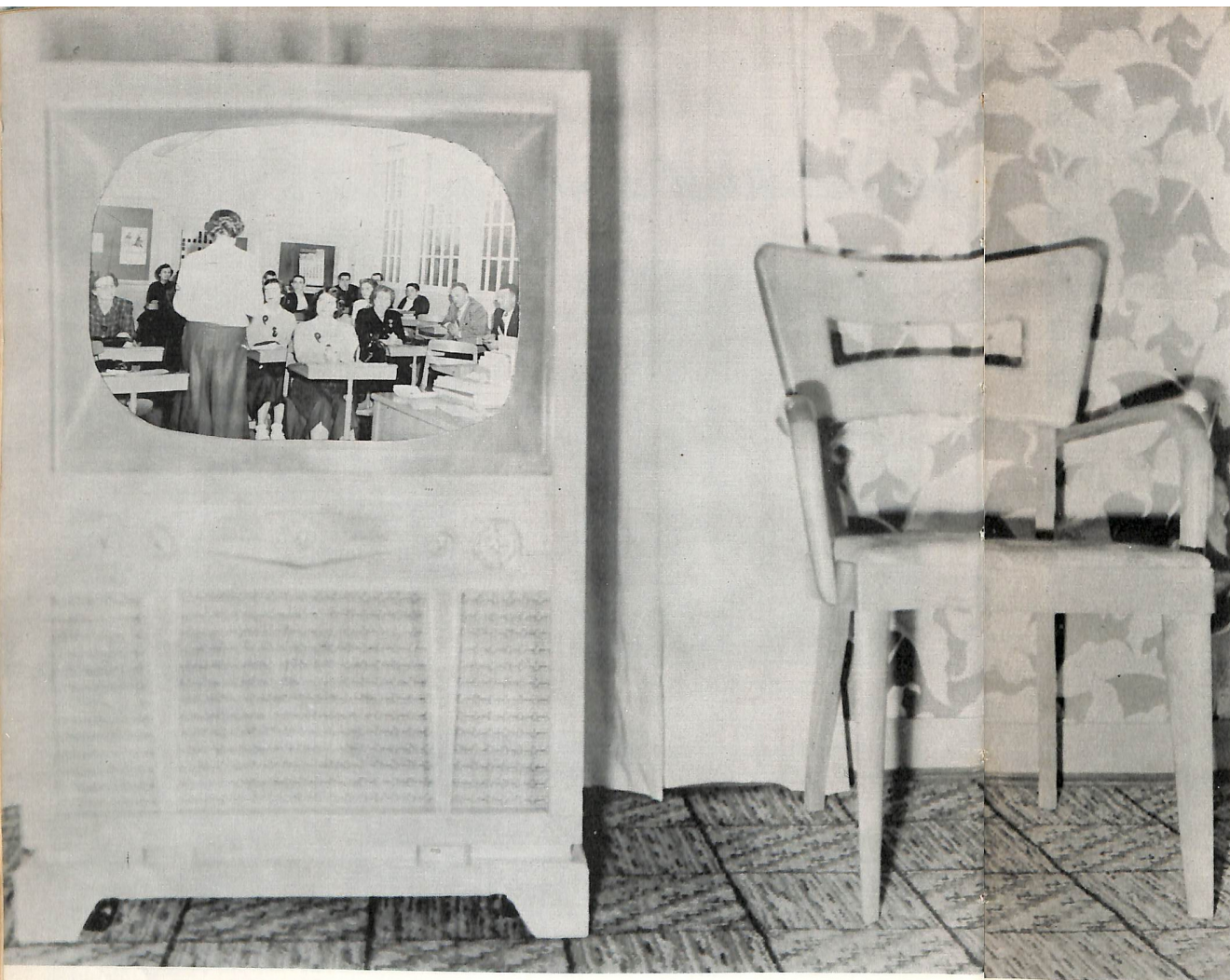
Princess Nadine



Princess Marjorie



Escorts: Jon Webster, Connie Kilmer, Henry Kilmer, Don Rasmussen, Laurie Fitzpatrick, Ray Haag, Dick Oliver, Dick Gay.



Panel of Experts

meets to discuss the forthcoming student body elections

PRODUCERS *Kay Granquist* *Nadine Meador*
 MAKE UP AND COPY *Shirley Fox* *Nadine Meador*





JOHN BROWN
United States History
Social Economics Coach

HELEN BRUNNER
Orchestra Chorus

Helen Brunner

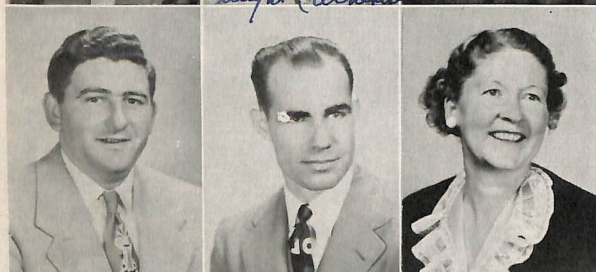


GERALD BURNETT
Physical Education Coach

DWIGHT CATHERWOOD
Orientation & World Geog.
Guidance & Counseling
Algebra Coach

DORIS COLTER
English Dean of Girls

Dwight Catherwood



ERNEST GETTEL
Mathematics
Student Body Finance

LOUISE GILLES
Bookkeeping Band

GAYLE GRAYBILL
Home Economics



SHIRLEY ILDSTAD
Journalism English

DALE LIBERTY
United States History
Speech English
Dramatics

The photographer catches the faculty at ease at



They

Guide

MARIAN LOCHER
Girls' Physical Education
Coach

MARJORIE LOGSDON
English Spanish



Marjorie Logsdon

ROBERT LUNDBORG
Commercial Arts

LILA OPPENLANDER
Orientation & World Geog.
English Typing

ALVIN PFAHL
Vocational Agriculture



Lila Oppenlander

MARJORIE PINKHAM
Art French Latin

GILBERT SHEARER
Science Biology Physics

PHYLLIS THORNTON
Mathematics Science



Phyllis Thornton

the Christmas tea, sponsored by the Annual Class.



JACK TILTON
Industrial Arts
Driver Education
Coach

ELLA TRIOL
Library

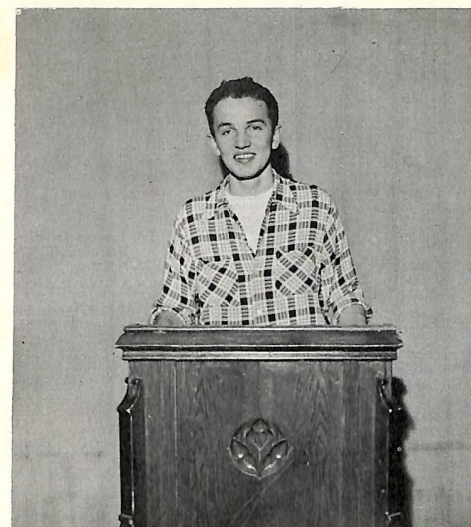
The SCHOOL BOARD met regularly to discuss the latest business. The board consists of a dependable group who work and plan for the benefit of West Linn High School. The members consist of

FRANK MILLIKEN, CHAIRMAN
KENNETH RENNER, CLERK
WALTER MOSER
LESLIE ROBERTS
GORDON DeBOK
LES BENNETT
SUPERINTENDENT CHESTER L. TUNNELL

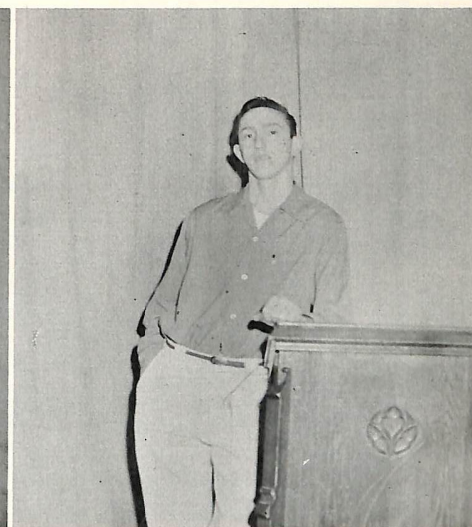
The STUDENT COUNCIL this year undertook the revision of the constitution, the improvement of election procedures, and the assignment of club projects with the reward of satisfactory results in each undertaking.



First Row: Shirley Fox, Frances Moser, Helen Blinkhorn, Henry Kilmer, Jon Webster, Sharon Zirbel, Nadine Meador, Opal Bradshaw, Keith Blue. Second Row: Advisers Dale Liberty and Marjorie Logsdon, Bob Eisele, Larry Kromling, Allen Arthur, Marvin Mitchell, Ray Haag, Paul Oppenlander, Don Eisele.



President Henry Kilmer



Vice President Jon Webster

Our Student Body Officers proved to be capable of fulfilling the duties of the offices they held. They supported the student body loyally and were glad to co-operate with the faculty.



Secretary Helen Blinkhorn



Treasurer Sharon Zirbel



Bus drivers Clarence Gross, Burton Neely, Bill Kaiser, Ben Vilhauer.

As usual well balanced and tasty meals were prepared by the COOKS, while the JANITORS swept, cleaned and polished to make the school glow with cleanliness. We were able to depend on transportation to and from school by the BUS DRIVERS who kept things rolling promptly.



Cooks—Mrs. Myrtle Pratt, Mrs. Anna McLarty, and Mrs. Mae Wilson.

As we were unable to snap a picture of the janitors we are listing their names.

FRANK SHIPLEY
ERNEST ANNAS
THERLOW McKUNE
CLARENCE RASMUSSEN



Gwen Gribble
Superintendent's Secretary



Esther Betts
Attendance Secretary

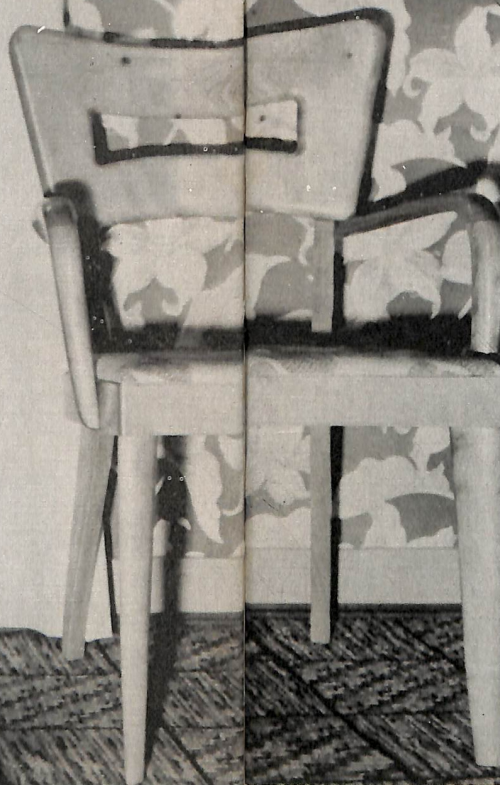
The office girls under the efficient supervision of Esther Betts found their class time occupied with typing, stenciling, filing, collecting slips, getting report cards ready and in order, writing excuses, and various tasks which gave them added experiences for secretarial work.

Several of the members of the class assisted Gwen Gribble, secretary to Superintendent Mr. Tunnell.

Working with the two secretaries has encouraged the girls in this field.



First Row: Virginia Eastman, Doris Walter, Betty Sather, Marion Adrian, Cathy Calzada, Nadine Meador, Sharon Zirbel, Betty Holmgren, Delores Sherlund.
Second Row: Adviser Esther Betts, Shirley Fox, Marlene Pleinis, Shirlee Childreth, Elsie Seely, Janet Lien, Marggie Zeller, Shirlee Williams, Karen Carr.
Third Row: Adviser Gwen Gribble, Sue Coe, Darlene Stewart, Helen Blinkhorn, Rudeen Engler, Elizabeth Guyton, Mary Ann Bernert, Jeanette Sharp, Etta King.



Meet the People

engrossed in one of the regular National Assembly programs.

PRODUCER *Ronnie Papez*

MAKE UP *Marilyn Petit*





Ray Haag
President

Class of '53



Bob Eisele
Vice-President



Delores Sherlund
Secretary



Kay Granquist
Treasurer



Advisers Mrs. Colter and Mr. Catherwood

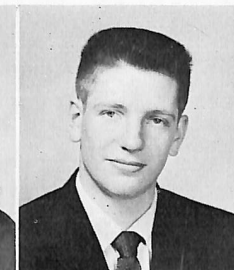
We, the senior class of 1953, extend our deepest and most sincere appreciation to you, Mrs. Colter and Mr. Catherwood, our advisors, who have guided and counseled us through our four years at West Linn. We are happy to say that you have led us through a successful four years; and we know you will continue to help others when they enter the doors of West Linn. We thank you both and we will always remember you in any memories we may have of West Linn High School.



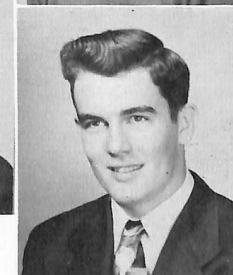
PAT ABBE
DON ADAMS
MARION ADRIAN



BEVERLY ALEX
ALYCE BAKER
JANET BAUER



QUENTIN BERQUIST
HELEN BLINKHORN
OPAL BRADSHAW

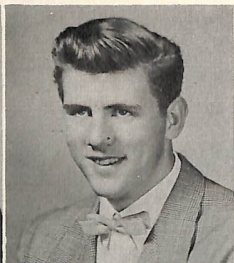


MARLENE BROOKS
CATHY CALZADA
DAVEY CHAPMAN

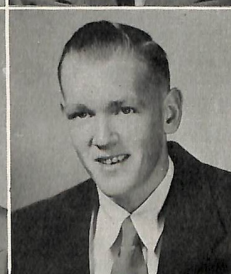
... Class of '53



SHIRLEE CHILDRETH



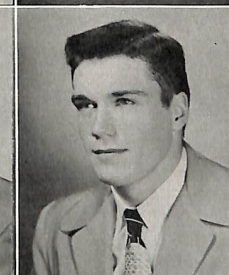
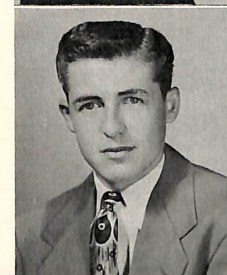
DON CHRISTENSEN
BETTIE CHUBB
ALAN COULTAS



LOUISA DAVENPORT
CLIFF DAVIS
BOB EISELE



RUDEEN ENGLER
DARRELL FISCHER



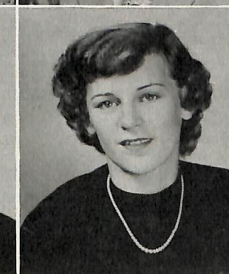
SHIRLEY FOX
DICK GAY
KAY GRANQUIST



ESTHER HEPPNER



GINGER FISH
LAURIE FITZPATRICK



ELIZABETH GUYTON
RAY HAAG
BEV HALBACK



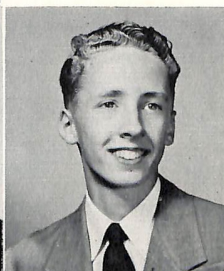
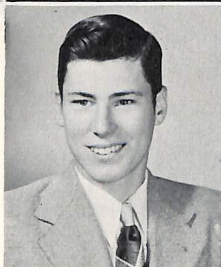
NANCY HERRMANN



BETTY HOLMGREN
RONALD JOHNSON
DONNA KIDD



CONRAD KILMER
HENRY KILMER
ETTA KING



LARRY KROMLING
GENE LAMKE



JANET LIEN
BRUCE LUNDGREN
SHIRLEY MANNING



JAMES McHONE
JENNIE McHONE
MAUREEN McILRATH



MARTIN McNICHOLAS



BONNIE LANE
JOHN LANE

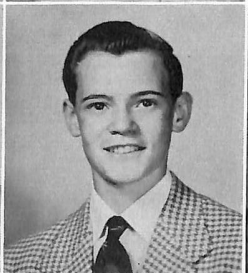




NADINE MEADOR



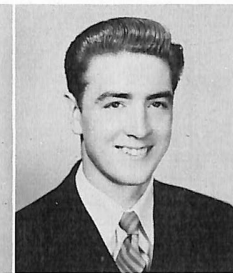
PAT MILLIKEN
GLORIA MISKA
MARVIN MITCHELL



CHARLES MORRIS
BILLIE NASH
JACK NELSON



BILL O'NEILL
RICHARD OLIVER



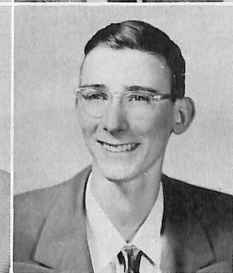
BETTY SATHER



PAUL OPPENLANDER
RONNIE PAPEZ



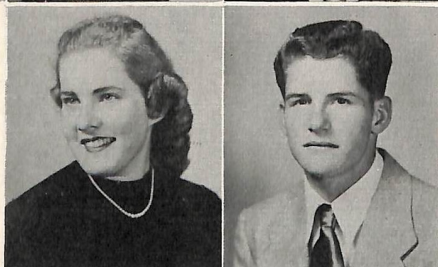
NEVA PERKINS
MARLENE PLEINIS
ALAN PYNN



DON RASMUSSEN
JAMES RAY
BILL RHODES



ELSIE SEELY

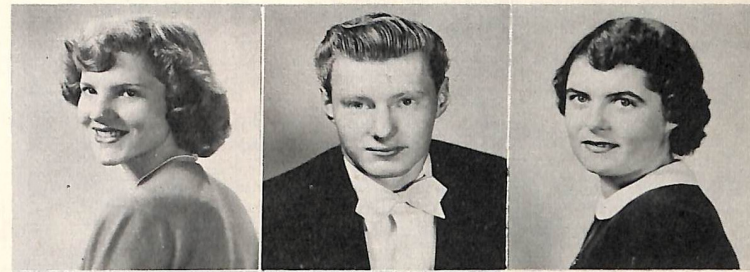


JEANNETTE SHARP
DELORES SHERLUND
BILL SMITH

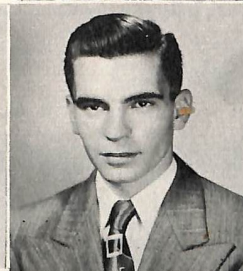
DICK SMITH
HERB SMITH
FERN SPAULDING



CARL STEELE
DARLENE STEWART



SHARON ZIRBEL



DORIS WALTERS
JON WEBSTER
JAMES WEST



GARY WHITTINGTON
SHIRLEY WILLIAMS
MARGGIE ZELLER



SHIRLEY STISSER
TED WADE

Class History

Because we the class of '53 have accomplished so much in so little we shall let our successors learn our accomplishments. As we open our dairy we read:

September 1949 As bashful but eager freshmen we chose Henry Kilmer to lead us through our first year. Doug Nichols was elected vice-president; Shirley Williams, secretary; and Anne Lander, treasurer.

May 1950 Don Rasmussen lettered in baseball to power us into the sports world and become our only four year letterman.

September 1950 With Doug Nichols, president; Fred Adams, vice president; Helen Blinkhorn, secretary; and Don Rasmussen, treasurer we began our sophomore year much wiser but just as weak—losing the annual bag-rush to the freshmen for our 2nd loss.

February 1951 Nadine Meador became the first basketball Queen of the Annual Contest sponsored by the Green and Gold Staff.

May 1951 With some smiles, others friendly good-byes, and a little sorrow we gave farewell to our Lake Oswego students who had, through two years, given to us both their friendship and leadership.

September 1951 Upperclassmen at last! Don Rasmussen was elected to lead us in our third year. Other officers were Jon Webster, vice-president; Nadine Meador, secretary; and Betty Holmgren, treasurer.

March 1952 Election time! Henry Kilmer was chosen Student Body president; Jon Webster, vice president; Helen Blinkhorn, secretary; and Sharon Zirbel, treasurer, with Larry Kromling, Yell King; Shirley Fox, Song Queen; and Shirley Williams and Ted Wade, Senior Rally Squad members we were led to what has been classed as one of the best rally squads in the county and were awarded third place at the TYV Jamboree.

May 1952 This year we saw the Seniors off with the Junior-Senior Sendoff at Jantzen Beach Park.

September 1952 Ray Haag was put in trust of the presidency of the Senior Class. Other officers elected were Bob Eisele, Vice-president; Delores Sherlund, secretary; and Kay Granquist, treasurer.

December 1952 Laurie Fitzpatrick and Don Rasmussen were named to the TYV football all-star teams. Don Christensen, Ray Haag, and Marvin Mitchell gained honorable mentions.

February 1953 Class honors were announced with Janet Bauer receiving top honors with her perfect 1.0 grade point average. Others named were Maureen McIlrath, salutatorian; Henry Kilmer, historian; Larry Kromling, class poet; Pat Milliken, class will; Opal Bradshaw, class prophet; and Bill Rhodes, class song.

March 1953 Again our athletes gained fame by placing Jon Webster and Laurie Fitzpatrick on the TYV all-star basketball teams. Connie Kilmer received an honorable mention.

May 1953 Lovely and popular Helen Blinkhorn was the choice to reign over the annual May Day festivities. Helen had as her court Maid of Honor Shirley Fox; and Princesses Delores Sherlund, Marjorie Zeller, Shirley Williams, Nadine Meador, Marlene Pleines, and Neva Perkins.

June 5, 1953 As we write the last pages in this diary at commencement we feel this is not the end but only the beginning. Here truly are four years that will be in our memories forever.



President Allen Arthur
Vice-President Gene Haxton



Treasurer Phyllis Hefenieder, Sgt.-at-Arms Glen Ek, Secretary Barbara Saxhaug.

Class of '54



Many students enjoyed this year's Junior Prom with its "Deep Purple" theme. The Junior and Senior Sendoff was another highlight sponsored by the juniors.



First Row: Dee Broyles, Mary Lou Davis, Sue Coc, Marjorie Bruck, Clara Courville.
Second Row: Allen Arthur, Gene Campynol, Bob Boyd, Kernan Bagley, Jim Dale.
Third Row: Ruth Abbe, Marilyn Dodge, Dolores Anderson, Dave Boijolie, Dwayne Bloom, Eugene Corey.

First Row: Betty Eckert, Marilyn Hale, Dorothy Hammes, Virginia Finch, Yvonne Fritchie.
Second Row: Hershall Groff, Fred Griessen, Clarence Duke, Wayne Fitzpatrick, Roger Gafey.
Third Row: Bernell Flath, Vernon Ford, David Goins, Gene Haxton, Glen Ek.



First Row: Nancy Knickrehm, Marjorie Hays, Leah Main, Phyllis Hefeneider, Shirley Helberg.
Second Row: Jim Klinger, Larry Haxton, Delbert Latham, Eddie Lohman, Fred Jaeger.
Third Row: Malcolm Hinkle, Eddie Hilton, Pat McAvoy, Joyce Martin, Bob Kunz, Chester Long.

First Row: Marilyn Petit, Mary Plambeck, Kay Molander, Eunice Misterek, Donna McLarty.

Second Row: Weslyn Moehnke, Don Pendergraft, John Parker, Jack Meyers, Darrel Morgan.

Third Row: Clara Quinn, Dale Reed, Pat Mehren, Frances Moser, Donna Oldenstadt.



First Row: Jackie Smith, Jackie Sievers, Barbara Rossman, Marilyn Rees, Barbara Saxhaug.
Second Row: Barbara Schroeder, John Rinkes, Keith Renner, Bob Russell, Pat Sharp.
Third Row: David Smith, Pat Ross, Jack Schwartz, EeVern Schnell, Carol Ryan.

First Row: Carma Wetzel, Rose Shuell, Bonnie Spencer, Donna VanHove.

Second Row: Thrumen Zeller, Marilyn Tauscher, Frank Zaniker, Nancy Smith, Bob Taffer.

Third Row: Leah Stisser, Orman Woodward, Bill Winslow, Melvin Somerville, Gerry Williams.





President Keith Blue
Vice President Ray Parra

Class of '55



Secretary Janice Carter
Treasurer Anita Nunn



The main event of the year for the SOPHOMORES, capably advised by Gayle Graybell and Alvin Pfahl, was their fall football dance.



First Row: Janice Carter, Anita Adams, Nadine Abbe, Patsy Anderson, Glenda Cumberland, Jean Baker, Sandra Bradley, Carolyn Betts.
Second Row: Jean Bennett, Carolyn Berning, Jim Blanchette, William Borland, Robert Chamberlain, Frank Bradshaw, Keith Blue.

Third Row: Dora Borland, Jo Ann Allinson, Janet Blattman, Mary Ann Bernert, Karen Carr, Kathleen Brooks, Arlene Brooks.
Fourth Row: Wayne Bauer, Sam Calzada, Donald Clark, Fred Cookman, Michael Bucholz, Edward Charman, Mary Blinkhorn, Delma Bruck.



First Row: Donna Kutch, Jacquelyn Lavier, Sharon Hoffman, Ann Kroll, Marjorie Hines, Doreen Hammes, Beverly Eckert.
Second Row: Don Jaeger, Henry Kunz, Russell Linde, Bob House, John Laird, Leroy Harrel, Merlin Fischer, Charles Lane, Richie Little.

Third Row: Donna Leete, Farryl Dreier, Mildred Kestek, Annalee Kunzman, Marguerite Gloss, Carolyn Grady, Janice Halback.
Fourth Row: Pat Gordon, Darwin Fergus, Bob Jennings, Bill Gleason, Ed Holland, Cliff Fahey, Branceford Davidson, Philip Jones,



First Row: Verna Misterek, Anita Nunn, Donna Melbrech, Sally McLarty, Betty Myers, Janice Oster, Helen Moser.

Second Row: George Petrick, Frank Oliver, Charles Oliver, Kurt Pederson, Barbara Piland, Barbara McCoy, Patty O'Neill.

Third Row: Jerry Newton, Jerry Logsdon, Ray Parra, Bob Phillips, Ray McEwen, Wayne McDonald, Tom McAvoy, Mike Long.

Fourth Row: Janice Moles, Dorothy Moehnke, Bill McIntosh, Gary Norman, John Melbrech, Marvin Pleinis, Delores Ott, Darlene Rinkes.



First Row: Dorothy Ruhl, Shirley Sarc, Donna Sharbuno, Eunice Smith, Mary Lou Wenc, Wanda Sather, Lucille Wallace.

Second Row: Bob Secrest, Adrian Spande, Dick Sorrels, Gary Welter, Dan Uttersen, Bob Rohe, Martin Sammons, Dick White, Tom Sweeney.

Third Row: Judy Wade, Jean Shipley, Carolyn Shockley, Jean Stoaks, Scarlet Skill, Betty Smith, Glaya Stewart, Barbara Wallace.

Fourth Row: Larry Seida, Dick Simantel, Arnold Schuldt, Bob Stewart, Dee Ryan, Jack Wills, Don Wheeler, Lyle Sprague.



President Don Eisele

Vice-President Ken Stewart

Class of '56



Secretary John Hooley

Treasurer Dorothy Papez

The monthly pie and fudge sales sponsored by the freshman class proved to be very successful. In addition the class sponsored one of the football season's dances. In February the entire class attended a skating party at the Oaks.





First Row: Ethel Fellows, Carol Corey, Janice Bean, Gladys Davenport, Joyce Fitzjohn, Jean Davis, Maurita Cox.

Second Row: Romaine Anderson, Duane Davis, Bruce Bliese, Michael Cipolla, Don Eisele, Jimmy Giles, Jerry Christensen, Wayne Coultas.

Third Row: Sally Gay, Donna Allinson, Lorraine Giles, Mary Armstrong, Ramona Adams, Claudia Bauer.

Fourth Row: Sharon Cummings, Darlene Bailey, Mike Coover, Larry Engleman, Robert Gwynne, Delbert Baker, Barbara Engel, Beverly Anderson.



First Row: Virginia Hering, Carole Lackey, Jim Martin, Jake Jacobs, Raymond Koellmeier, Jackie Mansfield, Sylvia Gould.

Second Row: Diane Lawton, Sharon Hickman, Buzz Hagg, Jim Herrmann, John Hooley, Rosalie Luscher, Jeanie Larson.

Third Row: Robert Kloer, Carl Miller, Bill Hering, Jake Jacobs, Raymond Koellmeier, Charles Groff, Jim Hall.

Fourth Row: Pamela Long, Nancy Holland, Peter Irish, Derald Lawrence, Herman McIntosh, Charles Goins, Carlotta Miller, JoAnne Heppner.



First Row: Dorothy Papez, Mary Kay Polzen, Carol Sanister, Henrietta Sattler, Thelma Peterson, Judy Riser, Madeline Moore.

Second Row: Jennice Robnett, Sharon Rasmussen, Darlene Rand, Bernice Puckett, Vickie Oldenstadt, Doreen Sarc, Dorothy Reynolds, Alice Quint.

Third Row: Ervin Riley, Richard Reeves, Lonnie Ryan, Bob Ragel, Bud Roland, Phil Rabick, Don Knutson.

Fourth Row: Brenda Schmeer, Rosalie Luscher, Harold Reynolds, John Roisum, Dale Reilly, Milo Moore, Joan Oswald, Janice Norman.

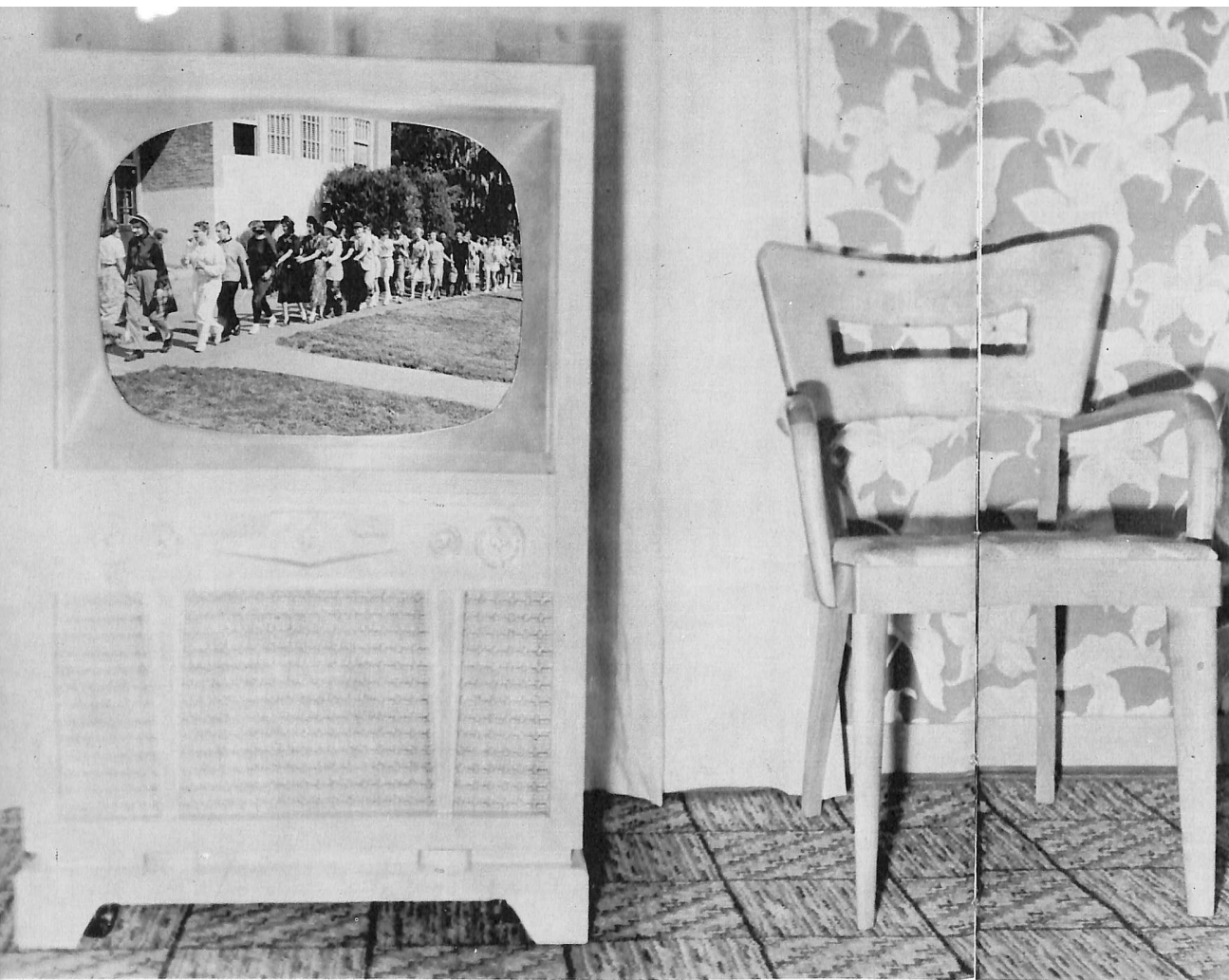


First Row: Shirley Zeller, Kay Warren, Carolyn Woods, Cecilia Schnell, Coleen Wells, Lorraine Shuell, Linda Wiedeman.

Second Row: Nancy Wohl, Margaret Shaffer, Janet Wolter, Nancy Woolard, Beverly Widmer, Ruth Seely, Erma Umber.

Third Row: Bill Taylor, Kenny Stewart, Ed die Stevens, Diane Wagner, Laura Wetzel, Robert Wanker, Lee Winer, Dal Stisser.

Fourth Row: Larry Young, David Whitaker, Riley Walters, Leroy Woods, Ron Wilson, Don Wilson, Jerome Van Winkle, Rex Turner, Jerry Steele.

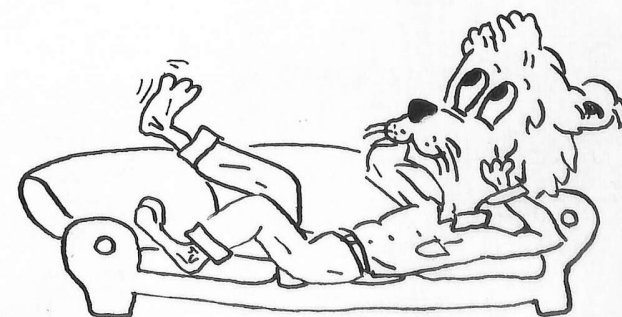


Performer's Playhouse

brings you a glimpse of the social activities of the cast.

PRODUCER

Alyce Baker





First Row: Jean Baker, Patsy Anderson, Etta King.
Second Row: Carolyn Shockley, Bernell Flath, Barbara McCoy.
Third Row: Adviser Dale Liberty, Dwayne Bloom, Allen Pynn, Larry Kromling.

This year's NATIONAL FORENSICS LEAGUE members have wound up another successful season of speech tournaments, debates, and speaking engagements.



Redecorating



First Row: Etta King, Pat Sharp, Eunice Misterek.
Second Row: Adviser Dale Liberty, Donna Sharbuno, Pat McAvoy, Allen Pynn.
Third Row: Ed Charman, Anita Adams, Barbara McCoy, Bernell Flath.
Fourth Row: Virginia Eastman, Dwayne Bloom, Carolyn Shockley, Pat Milliken.

All THESPIANS participated in the student body play this year in some capacity or other. In addition they decorated the boys' and girls' dressing rooms.

Play Practice.



First Row: Janice Carter, Marilyn Hale, Pat Ross.
Second Row: Janet Bauer, Marlene Pleinis, Betty Holmgren, Barbara McCoy.
Third Row: Marilyn Dodge, Eugene Corey, Chuck Morris, Pat Milliken.
Not in Picture: Jim Miller, Barbara Saxhaug.

Many music students diligently strive to become members of the honorary organizations of CRESCENDO. The officers for this year were: President Chuck Morris, Vice President Jim Miller, Secretary Marilyn Hale, Treasurer Barbara Saxhaug.

These snaps are of some of the contestants in our Talent Show.





First Row: Kay Granquist, Sharon Zirbel, Nadine Meador, Barbara Rossman, Cathy Calzada, Etta King, Keith Blue, Darrell Fischer.
Second Row: Jack Nelson, Bernell Flath, Janet Bauer, Eunice Misterek, Virginia Eastman, Betty Eckert, Maureen McIlrath, Opal Bradshaw.

Third Row: Marlene Pleinis, Shirlee Williams, Delores Sherlund, Helen Blinkhorn, Pat Milliken, Marilyn Dodge, Janet Lien, Pat Sharp, Pat McAvoy, Darlene Rinkes.
Fourth Row: Larry Kromling, Allen Arthur, Henry Kilmer, Roger Gaffey, Marvin Mitchell, Bill Rhodes, Ray Haag, Paul Oppenlander, Jack Schwartz.

Membership in the HONOR SOCIETY is the reward for those who possess scholastic ability, leadership, character and desire to serve.

First Row: Gloria Miska, Anita Adams, Maurene Mills, Nadine Abbe, Patsy Anderson, Leah Main, Janice Carter, Verna Misterek.
Second Row: Jean Baker, Donna Sharbuno, Anita Nunn, Sharon Hoffman, Barbara McCoy, Ann Kroll, Sandra Bradley, Jeanette Sharp, Marilyn Hale, Donna Mehlibrech.

Third Row: Mary Ann Bernert, Frances Moser, Mildred Kestek, Merlin Fischer, George Petrich, Shirley Sarc, Kay Molander, Judy Wade, Adviser Ernest Gettel.
Fourth Row: Jean Shipley, Shirley Hellberg, Nancy Smith, Caroline Berning, Darlene Stewart, Elizabeth Guyton, Eugene Corey, Ed Charman, Bob Chamberlain.



First Row: Nadine Meador, Lucille Effinger, Opal Bradshaw, Jean Baker, Donna Sharbuno, Shirley Fox, Sue Coe, Patsy Anderson, Shirlee Williams.
Second Row: Shirley Childreth, Shirley Sarc, Doris Walters, Janice Carter, Sharon Hoffman, Donna Mehlibrech, Barbara Rossman, Nadine Abbe, Marlene Pleinis, Gerry Williams.

Third Row: Adviser Marian Locher, Leah Main, Sharon Zirbel, Carma Wetzel, Margie Hays, Cathy Calzada, Etta King, Dorine Hammes, Neva Perkins, Margie Zeller.
Fourth Row: Beverly Eckert, Betty Holmgren, Delores Sherlund, Maureen McIlrath, Marguerite Gloss, Kay Granquist, Marion Adrian, Darlene Rinkes, Beverly Halbach, Phyllis Hefenieder.

The G. A. A. girls are always found to be planning play days, games with other schools, or thinking of ways to be of service and real credit to the school.

The organization is composed of those girls who have earned enough points through their different activities to qualify. They were kept busy this year inventing new and clever ideas for money making projects, which kept the treasury brimming.

The costuming for the new G. A. A. initiates proved to be even more outstanding this year when it was decided the theme would be "The Gay Nineties".

With Kay Granquist as president and Miss Locher as their adviser the club worked diligently to be a success.

First Row: Leah Stisser, Pat Ross, Gloria Miska, Marilyn Petit, Eunice Misterek, Rose Shuell, Kay Molander, Janet Bauer, Anne Knoll.
Second Row: Elizabeth Guyton, Pat Abbe, Yvonne Fritchie, Marilyn Hale, Carol Ryan, Dorothy Hammes, Betty Moser, Bonnie Spencer, Jackie Sievers, Adviser Marian Locher.

Third Row: Shirley Hellberg, Pat Milliken, Helen Blinkhorn, Jean Shipley, Nancy Smith, Joyce Martin, Louisa Davenport, Donna Oldenstadt, Frances Moser, Darlene Stewart, Rudeen Engler.
Fourth Row: Pat McAvoy, Ruth Abbe, Barbara Schroeder, Pat Sharp, Jean Bennett, Pat Mehren, Marilyn Dodge, Anna Lee Kunzman, Virginia Eastman, Shirley Manning, Mildred Kestek.





First Row: Nancy Knickrehm, Allen Pynn, Nancy Smith, Kay Molander. *Third Row:* Ronnie Papez, Nancy Herrman, Alyce Baker, Dick Sorrels, Bonnie Spencer.
Second Row: Adviser Marjorie Pinkham, Jackie Sievers, Louisa Davenport, Nadine Meador, Carol Ryan.

The efforts of ALPHA RHO TAU'S members gave the halls of West Linn a touch of personality with their displays of art work.



First Row: Bob Russell, Alyce Baker, Ronnie Papez, Nadine Meador, Eugene Corey. *Second Row:* Adviser Marjorie Pinkham, Leah Stisser, Joyce Martin, Pat Mehren, Nancy Smith, Pat Ross, Marilyn Petit.

The LATIN CLUB is not all study. The members have an annual picnic at the end of the year to look forward to plus numerous events throughout the year.



First Row: Sharon Hoffman, Janice Carter, Gloria Miska, Jean Baker, Donna Sharbuno, Sue Coe, Billie Nash, Bettie Chubb, Anita Nunn. *Third Row:* Glen Ek, Bob Jennings, Delores Ott, Jean Shipley, Barbara Schroeder, Ruth Abbe, Pat Sharp, Fred Jaeger, Keith Renner.
Second Row: Anita Adams, Leah Main, Jack Nelson, Keith Blue, Adrian Spande, Richie Little, Tom McAvoy, Barbara Rossman. *Fourth Row:* Jack Wright, Delbert Latham, Wayne Fitzpatrick, Don Christensen, Laurie Fitzpatrick, Jack Myers, Gary Welter, Wayne McDonald, Mike Coover.

The SKI CLUB not only proved active in the sport of skiing, but also fulfilled the project of placing waste containers throughout the campus.



First Row: Leo Clifford, Martin Sammons, Bill Her- ing, Henry Kunz, Glen Ek, Merlin Fischer, George Petrich. *Third Row:* Adviser Alvin Pfahl, Joe Rinkes, Charles Goins, Vernon Ford, John Laird, Kurt Pederson, Ted Stout, Fred Jaeger.
Second Row: Duane Davis, Darrell Fischer, Chester Long, Don Jaeger, Bruce Birtchet, Howard Reynolds, Jerry Logsdon, Mike Long. *Fourth Row:* Gary Norman, Jack Myers, Dick Si- mantel, Bob Boyd, Dee Ryan, Don Christensen, Allen Pynn, Jack Willis, Ron Wilson.

The display of blue ribbons and other winnings illustrate that the F.F.A. has worked to bring added honors to West Linn High.



First Row: Jon Webster, Bill Smith, Cliff Fahey, Tom McAvoy, Dave Chapman, Dick Gay.
Second Row: Darrell Fischer, Ted Wade, Ray Haag, Marvin Mitchell, Dave Goins, John Lane, Dick Sorrels.
Third Row: Malcolm Hinkle, Clifford Davis, Jack Myers, Don Christensen, Henry Kilmer, Keith Renner, Jack Nelson.
Fourth Row: Bill McIntosh, Laurie Fitzpatrick, Frank Zaniker, Conrad Kilmer, John Rasmussen, Wayne Fitzpatrick, Delbert Latham, Bob Eisele.

Each member of the LETTERMEN'S CLUB fights to bring home the bacon in the sport he has chosen.

First Row: Sandra Bradley, Leah Main, Nancy Herrman, Ronnie Papez, Alyce Baker.
Second Row: John O'Connor, Virginia Eastman, Joyce Martin, Janet Lien, Pat Mehren, Bill O'Neill.
Third Row: Darrell Fischer, Glen Ek, Allen Pynn, Jack Schwartz, Jim Klinger.



The CAMERA CLUB was eager and ready throughout the year to be of service to the entire school and especially to the annual staff in helping them depict our school life with more realism.

Organizations serve the student body in various capacities



This year's "ANNUAL STAFF" worked like hungry lions to meet their deadlines and to make possible this year's book.



First Row: Nadine Meador, Leah Main, Ronnie Papez, Opal Bradshaw, Kay Granquist, Shirley Fox, Arlene Brooks.
Second Row: Nancy Herrmann, Jack Schwartz, Adviser Marjorie Logsdon. Not pictured is Alyce Baker.



First Row: Paul Oppenlander, Marvin Mitchell, Henry Kilmer, Dave Goines, Ray Haag.
Second Row: Dave Chapman, Keith Renner, Larry Kromling, Allen Arthur, Eugene Corey.
Third Row: Adviser Robert Lundborg, Connie Kilmer, Don Christensen, Roger Gaffey, Laurie Fitzpatrick.



Twelve new members of the HI-Y were inducted at an impressive candlelight induction ceremony held at the First Congregational Church in Portland on October 8.

A Thanksgiving program, featuring the Kings Heralds & Co. from Cascade College, was the first event sponsored by the group. Hi-Y and Tri-Hi-Y co-sponsored the traditional Tag Day Talent Show which included grade school and guest talent.

The painting of the Hi-Y insignias on the waste disposals in the hall and an auction sale were both successful.

The boys presented the school with a Christian flag and matching base for the American flag.

Officers of the club were Marvin Mitchell, president; Ray Haag, vice-president; Henry Kilmer, secretary; Dave Goins, treasurer; and sergeant-at-arms, Connie Kilmer.



First Row: Catuy Calzada, Marion Adrian, Beverly Halbach, Betty Holmgren, Maureen McIlrath, Opal Bradshaw, Betty Sather.
Second Row: Delores Sherlund, Helen Blinkhorn, Shirley Hellberg, Marilyn Rees, Pat Sharp, Pat McAvoy, Adviser Phyllis Thornton.
Third Row: Shirley Fox, Sharon Zirbel, Nadine Meador, Shirlee Williams, Pat Milliken, Marilyn Hale, Phyllis Hefenieder, Barbara Rossman, Eunice Misterek.



Left to right, top to bottom: Treasurer Opal Bradshaw, Adviser Miss Thornton, Vice President Bev Halbach, Chaplain Maureen McIlrath, President Betty Holmgren. Not in picture: Secretary Marion Adrian.

The members of the TRI-HI-Y under the leadership of Betty Holmgren, worked without faltering to be of service to the school and community.

Installation of new officers, a cake walk, a Thanksgiving basket, Tri-Hi-Y—Hi-Y talent show, and a project for the school were among the activities of the organization.

Engaging speakers and carefully planning the Monday night meetings, swept the interest to an all-time high, and brought the girls together in a more united group.

President Betty Holmgren, Vice-President Bev Halbach, Secretary Marion Adrian, Treasurer Opal Bradshaw, Chaplain Maureen McIlrath, and the members advised by Phyllis Thornton, worked together as a team throughout the year.

These charming flappers are just one of the entertaining acts in the Tri-Hi-Y—Hi-Y Talent Show.





Through the efforts of the LIBRARY CLUB the students have enjoyed a more attractive library this year.

First Row: Janice Moles, Janice Oster, Shirley Sarc, Joanne Allison, Jackie Smith, Fern Spaulding.

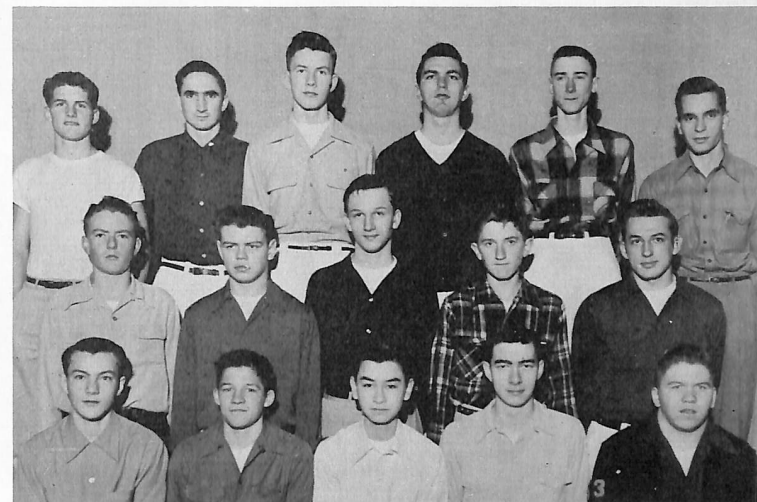
Second Row: Bevely Eckert, Margie Hays, Shirley Hellberg, Betty Eckert, Dorothy Hannes, Phyllis Pitts, Betty Moser, Adviser Ella Triol.

Third Row: Carma Wetzel, Laura Wetzel, Anna Lee Kunzman, Barbara Piland, Frances Moser, Donna Oldenstadt, Betty Gross.

First Row: Adrian Spande, Keith Blue, Frank Bradshaw, Paul Oppenlander, Darrell Fischer.

Second Row: Don Jaeger, Bill Smith, Bob Tapfer, Mike Long, Ross Barber.

Third Row: Herbert Smith, Eugene Lamke, Roger Gaffey, Fred Griessen, Bill Rhodes, Jim West.



Paul Oppenlander, fire chief, and the other members of the FIRE SQUAD were always alert in keeping us drilled for emergencies.

First Row: Janice Carter, Sharon Hoffman, Marilyn Rees, Anita Adams, Bonnie Spencer, Nadine Meador, Janet Blattman.

Second Row: Sharon Zirbel, Anita Nunn, Verna Misterek, Barbara Rossman, Sue Coe, Phyllis Hefenieder.

Third Row: Delores Ott, Mary Blinkhorn, Beverly Halbach, Marlene Pleinis, Marggie Zeller, Neva Perkins, Gerry Williams.

Fourth Row: Marilyn Hale, Delores Sherlund, Betty Holmgren, Pat Sharp, Pat Milliken, Helen Blinkhorn, Mary Lou Davis, Jean Shipley. Adviser Shirley Ildstad, not in picture.



The PEP CLUB is a service organization which did its best to outyell the competing pep clubs, and support West Linn's teams of the 1952-53 season.



First Row: Janet Lien, Marilyn Rees, Nancy Smith, Gerry Williams, Ruth Abbe.

Second Row: Betty Gross, Sue Coe, Frances Moser, Maureen McIlrath, Adviser Shirley Ildstad.

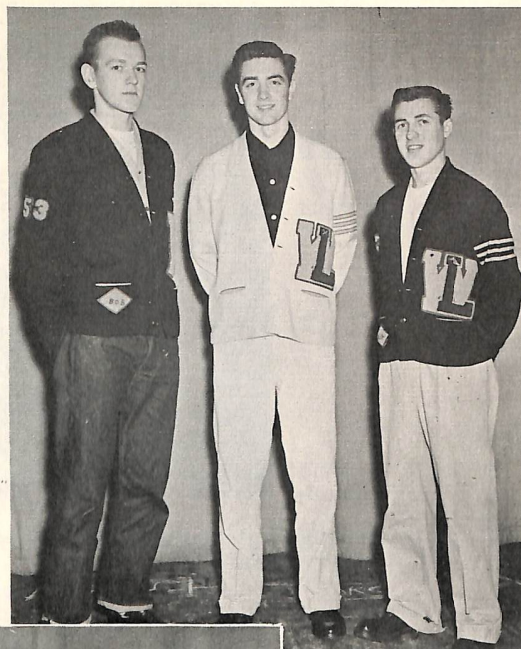
Third Row: Henry Kilmer, Martin McNicholas, Marvin Mitchell, Clarence Duke, Don Adams, Charles Oliver.

By reading the school paper we can easily see that THE AMPLIFIER STAFF did not leave a stone unturned to bring us the latest student news.

Everyone Participates...

The Girls' League started things rolling in the fall by having a "get acquainted" meeting for the benefit of the freshmen girls and then sponsoring the first dance of the year. Throughout the year a Cake Auction, Lug Day, The Conference at Oswego, The Father and Daughter Banquet, The Style Show, and The Mother and Daughter Tea, were the successful results of the team work and co-operation of all the girls.

The Boys' Club held to tradition by sponsoring the Father and Son Banquet.



BOYS' CLUB OFFICERS
President Bob Eisele, Treasurer Don Rasmussen, Secretary Dick Gay.



GIRLS' LEAGUE OFFICERS

First Row: Vice President Marion Adrian, Girls' League Room Attendant Kay Granquist, President Nadine Meador, Secretary-Treasurer Janet Bauer.

Second Row: Class Representatives: Verna Misterek, Betty Holmgren, Eunice Misterek, Mary Kay Polzen.



First Row: Kay Warren, La Velle Loudon, Betty Smith, Dorine Hammes, Madeline Moore, Janice Oster.
Second Row: Donna Allison, Judy Ryser, Cecilia Schnell, Thelma Pederson, Ramona Adams, Shirley Zeller, Sally Gay.

Third Row: Sharon Rasmussen, Sylvia Gould, Carolyn Betts, Farryl Dreier, Janice Moles, Donna VanHove.

Both the GIRLS' AND BOYS' CHORUS have worked this year to learn the fundamentals of music in preparation for a place in next year's mixed chorus.



First Row: Charles Lane, Lonnie Ryan, Accompanist Janet Bauer, Milo Moore, Vernon Ford.

Second Row: John Mehlbrech, Mark Kaetterhenry, Jim Klinger, Don Wheeler.



First Row: Jackie Sievers, Dorothy Haynes, Kinda Wiedeman, Jean Baker, Anita Adams, Janice Carter, Janet Blattman, Gloria Miska, Lucille Effinger.
Second Row: Barbara Wallace, Sally McLarty, Karen Carr, Dee Smith, Yvonne Fritchie, Brenda Schmeer, Cathy Calzada, Beverly Alex, Marilyn Hale, Sandra Bradley, Betty Myers.

Third Row: Donna Oldenstadt, Shirley Sarc, Phillip Rabick, Bill O'Neill, Bob Kunz, Ray Parra, Keith Blue, Adrian Spande, Barbara McCoy, Janet Wolter, Pat Milliken, Donna Kidd.
Fourth Row: Jean Bennett, Dorothy Moechnke, Bob Chamberlain, John Rinkes, Mike Buckholz, Ed Charman, Phillip Jones, Vicki Oldenstadt, Carolyn Shockley.

The Christmas program, Spring Concert, and Music Contest were the pleasing results of the concerted efforts of the MIXED CHORUS, a group of advanced music students.

The BAND under the direction of Mr. Gilles was a dependable group, who has always been ready and willing to support our teams, play at pep assemblies, present programs, and to produce added entertainment.

First Row: Peggy Tunnell, Pat Ross, Jackie Mansfield, Shirley Stisser, Carol Corey, Leah Stisser.
Second Row: Merlin Fischer, Jim Giles, Kurt Pederson, Eugene Corey, Carl Miller, Jim Martin.

Third Row: Instructor Louis Gilles, Barbara Engel, Joyce Martin, Nancy Smith, Margaret Shaffer, Marilyn Lodge.
Fourth Row: Robert Rohe, Ed Charman, Jack Wills, Ed Holland, Jerry VanWinkle, Chuck Morris, Russell Linde.



Faithful practice at noon has proved to be of benefit to the select group of girls in the NO-NETTE. Plus performances for the students they have answered many outside requests, and have been accepted with hearty applause.



First Row: Carolyn Shockley, Barbara McCoy, Barbara Saxhaug, Marilyn Hale, Anita Adams, Janice Carter, Beverly Alex, Janet Bauer, Pat Milliken, Betty Holmgren.
Not in Picture: Adviser, Helen Brunner.

A new group, THE BOYS' QUARTET, plans to work together to compete with the Girls' Nonette next year.

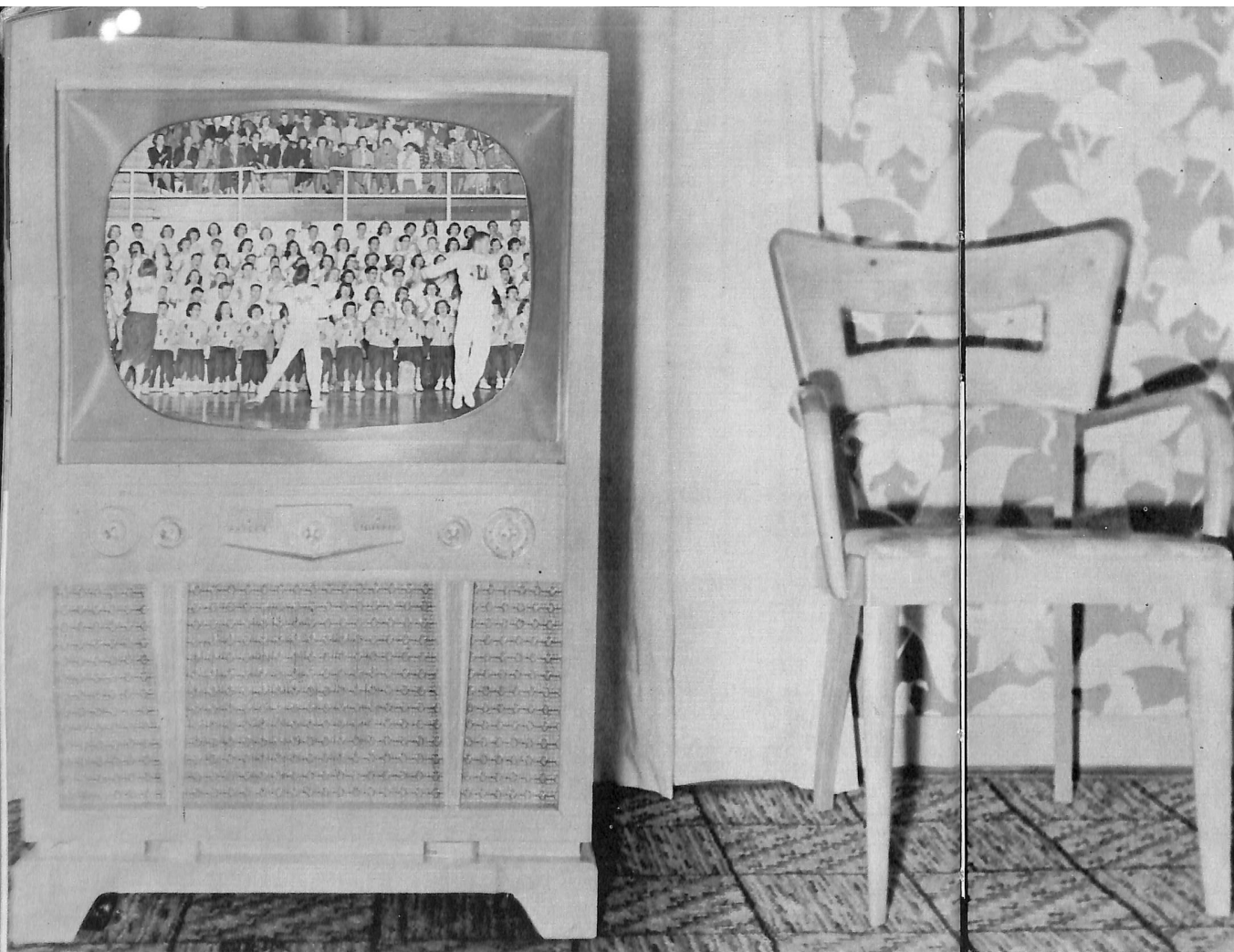


First Row: John Rinkes, Adrian Spande, Bob Chamberlain, Ed Charman.

The regular string orchestra and selected band members constitute the ORCHESTRA, which performs when called upon to play at banquets, PTA meetings, programs, and various other occasions.



First Row: Barbara Saxhaug, Ed Charman, Jim Giles, Jim Martin, Eugene Corey, Barbara Engel, Pat Mehren, Lorraine Shuell.
Second Row: Chuck Morris, Marlene Pleinis, Yvonne Fritchie, Janet Wolter, Buzz Haag, Rose Shuell, Dorothy Reynolds, Lorraine Giles, Adviser Helen Brunner.



Parade of Sports

brings you a review of sport headlines and outstanding stars

PRODUCER *Jack Schwartz*





With an "L"

Shirley Fox, Donna Sharbuno,
Barbara Saxhaug, Shirlee Williams.

Cheerleaders Rouse 'em

This year's RALLY SQUAD was one of the best in a long time at West Linn. They captured third place at the TYV League jamboree and received many compliments for the way in which they led the Lion rooting section.



Front Row: Shirley Fox, Barbara Saxhaug, Donna Sharbuno.
Back: Larry Kromling, Gary Welter, Kernan Bagley, Ted Wade.



Give 'em the Axe

Larry Kromling, Kernan Bagley, Ted Wade, Gary Welter.



First Row: Coach Jiggs Burnett, John Roisum, Laurie Fitzpatrick, Connie Kilmer, Jack Myers, John Rinkes, Dick Gay, Don Christensen, Assistant Coach Jack Tilton.
Second Row: Jack Wills, Ed Holland, Clifford Fahey, Bill McIntosh, Don Rasmussen, Dave Goins, Clarence Duke, Ray Haag, John Lane.

Third Row: Branceford Davidson, Bill Smith, Clifford Davis, Davey Chapman, Dick Smith, Charles Oliver, Bill Gleason, Ray Parra, Bill O'Neill.
Fourth Row: Wayne McDonald, Bob Jennings, Kernan Bagley, Bill Illingworth, Wayne Fitzpatrick, Frank Zaniker, Quentin Berquist, Marvin Mitchell.

Gridmen have ups and downs

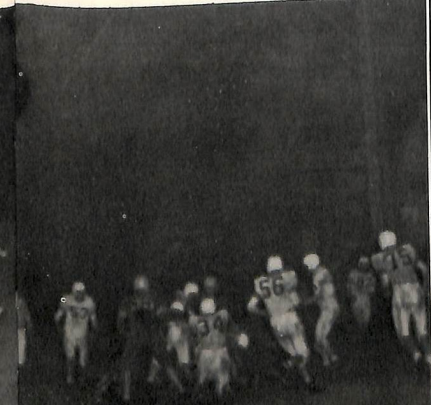
Jiggs Burnett's football Lions, hurt by the loss of back Connie Kilmer and guard John Rinkes in mid-season, played hot-and-cold all year and ended with a 3 win - 6 loss record. Included among the six defeats were two one-point losses which, had the verdict been the other way, could have altered West Linn's season record considerably. In TYV play, the Lions capped sixth place.

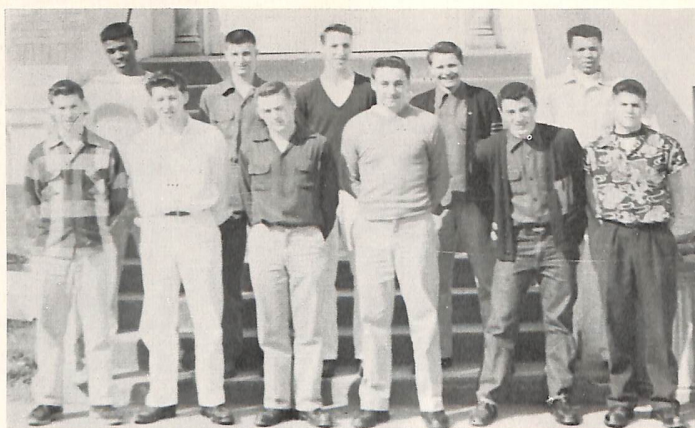
High point of the season was reached when the Lions met Hillsboro, TYV League kingpins, and gave them their closest call in league play, losing by a scant 7-6 margin.

End Laurie Fitzpatrick and halfback Don Rasmussen were named to the TYV League all-star teams, while Ray Haag, Don Christensen, and Marvin Mitchell received honorable mention. Fitzpatrick was awarded the Bernie Hermann "Most Inspirational Player" award and, along with Haag, was named to the county all-star squad. Laurie was also named an alternate to the Shrine all-state team.



Score		Board	
West Linn	32	Canby	14
West Linn	26	McMinnville	27
West Linn	6	Oregon City	27
West Linn	0	Forest Grove	25
		West Linn	7
		West Linn	13
		West Linn	19
		West Linn	6
		West Linn	0
		Milwaukie	25
		Tigard	6
		Beaverton	14
		Hillsboro	7
		Newberg	35





First Row: Ray Parra, Bob Jennings, Branceford Davidson, Ed Holland, Cliff Fahey, Jerry Newton.
Second Row: Clarence Duke, Wayne McDonald, Gene Campynol, Bill O'Neill, Kernan Bagley.

Bees, Cubs Pick Up Pigskin Knowhow

Coach Jack Tilton's JUNIOR VARSITY GRIDDERS were the hard luck team this year, losing all six games played by very narrow margins. A lack of manpower hurt the jayvees, who played a very tough schedule.

The Lion FROSH, mentored by Dwight Catherwood, played fine defensive ball and ended with a successful four win, three loss record.



First Row: Charles Groff, Jerry Christensen, Lee Winer, Ervin Riley, Bob Wanker, Wayne Coultas, Duane Davis.
Second Row: Jim Herrmann, Buzz Haag, Joe Rinkes, Don Eisele, John Hooley, Herman McIntosh, Jim Blanche, Harold Reynolds.

Third Row: Larry Young, Charles Goins, Don Wilson, Ron Wilson, LeRoy Wood, Derald Lawrence, John Roisum.



First Row: Connie Kilmer, John Parker, Laurie Fitzpatrick, Frank Zaniker.
Second Row: Jack Myers, Don Rasmussen, Ed Lohman, Ray Haag, Bob Eisele.
Third Row: Coach Dwight Catherwood, Jon Webster, Dick Gay, Manager Lonnie Ryan.

Cagers Prove Proficient

Coach Dwight Catherwood's Lion CAGERS enjoyed a very successful season, finishing with a record of 15 wins against 7 defeats. They reached their peak in mid-season, when they captured seven victories in a row. This win streak enabled them to finish the TYV League campaign in a second place tie. In the District 12 tournament, the Lions had a hard time finding the mark as they dropped a very close decision to Molalla in the first game.

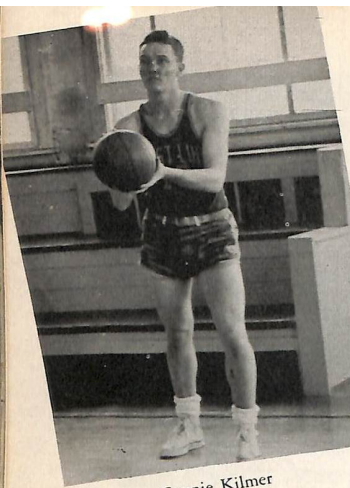
High scorer for the year was center Laurie Fitzpatrick, who totaled 324 points. Guard Jon Webster and Forward Connie Kilmer also averaged better than 10 points per game. Jon scored a total of 262, while Connie hit for 239. Guard Don Rasmussen clicked for 176 and Forward Frank Zaniker scored 152 to round out the top five.

Bob Eisele led the free shooters with a .641 percentage and Fitzpatrick hit .437 from the floor to lead the team in that department.

Jon Webster placed on the TYV League all-star first team. Laurie Fitzpatrick won a place on the second team and Connie Kilmer received honorable mention.

Laurie and Jon also made the District 12 dream team.

Seniors on the squad included Laurie Fitzpatrick, Jon Webster, Connie Kilmer, Don Rasmussen, Dick Gay, Bob Eisele and Ray Haag. Others were: Frank Zaniker, John Parker, Ed Lohman, and Jack Myers. Laurie and Jon were elected co-captains.



Connie Kilmer

WL	73	WU Frosh	70
WL	47	St. Helens	45
WL	36	Molalla	50
WL	63	Milwaukie	48
WL	62	St. Helens	51
WL	70	Molalla	58
WL	65	Milwaukie	63

TYV LEAGUE

WL	56	Forest Grove	63
WL	56	Beaverton	53
WL	44	Newberg	56
WL	65	Oregon City	56
WL	49	Hillsboro	56
WL	55	McMinnville	47
WL	74	Tigard	66
WL	60	McMinnville	48
WL	67	Forest Grove	56
WL	56	Tigard	49
WL	72	Newberg	60
WL	67	Beaverton	58
WL	55	Hillsboro	57
WL	61	Oregon City	63

DISTRICT 12

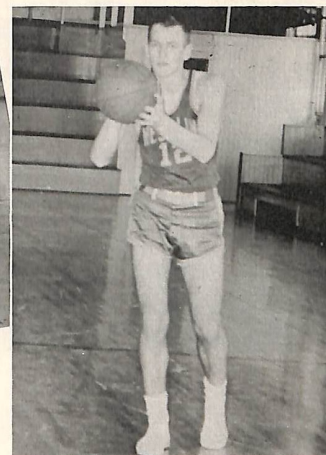
WL	44	Molalla	47
----	----	---------	----



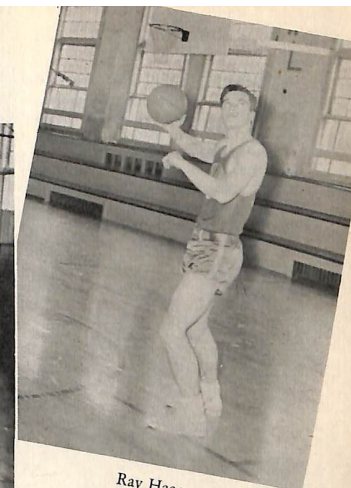
Frank Zaniker



John Parker



Bob Eisele

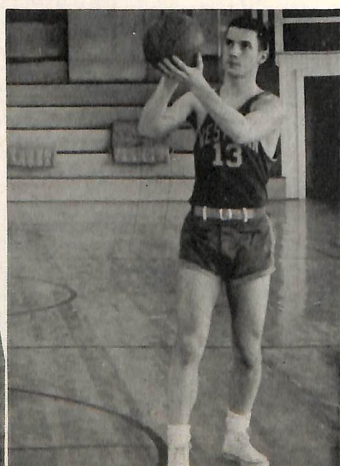
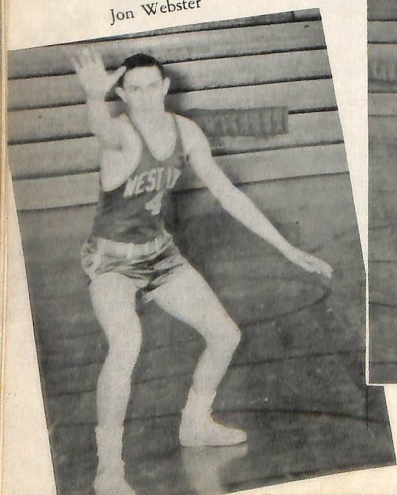


Ray Haag

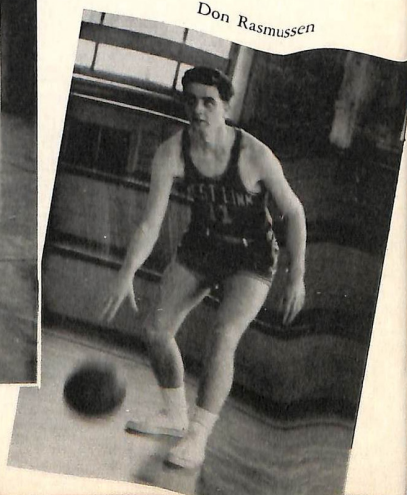
Cagers Win Fifteen

78

Jon Webster



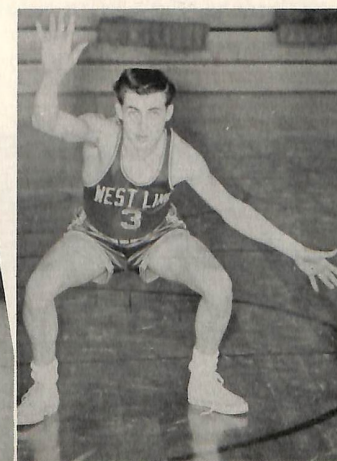
Laurie Fitzpatrick



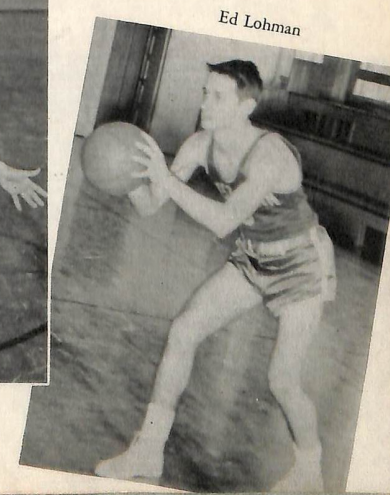
Don Rasmussen



Jack Myers



Dick Gay



Ed Lohman

79

B SQUAD *First Row:* Ray Parra, Bob Jennings, Cliff Fahey, Keith Blue.
Second Row: Manager Charles Goins, Wayne McDonald, Bill Thorpe, Mike Buchholz, Coach Burnett.
Third Row: Bill McIntosh, Jack Wills, Clarence Duke, Gene Campynol, Dee Ryan.



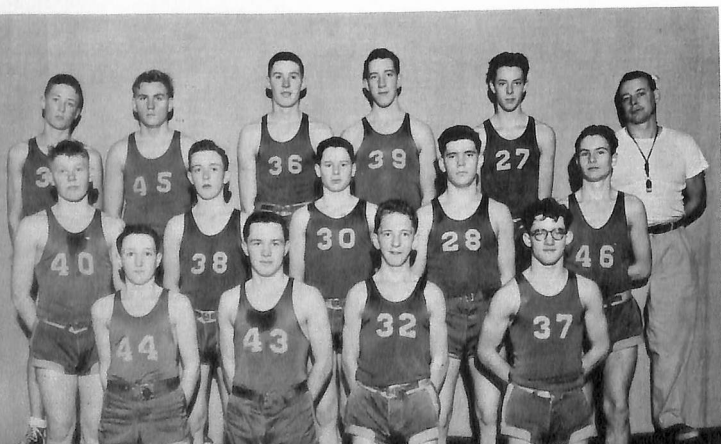
B Squad, Frosh Gain Experience

Coach Jiggs Burnett's Lion JAYVEES had their up and downs this year, finishing with a record of 11 wins and 9 losses. Their TYV slate included 9 victories and 5 defeats.

Guard Bill Thorpe led scoring with 199 points, just ahead of forward Gene Campynol who tallied 191. Bill McIntosh was next with 174, while Clarence Duke had 134.

The performance of these players, coupled with several more who turned in fine showings in reserve roles, indicate some fine prospects are in store for next year's varsity.

The Lion FROSH, also mentored by Coach Burnett, was hampered by injuries to key players through much of the season, but still managed to finish high among TYV teams.



FRESHMAN BASKETBALL: *First Row:* Ervin Riley, Charles Groff, Bob Ragel, John Hoolley.
Second Row: Don Eisele, Mike Cipolla, Carl Miller, Bob Wanker, Ed Stevens.
Third Row: Jim Herrman, David Whitaker, Mark Kaetterhenry, Don Wilson, Larry Engleman, Coach Burnett.



First Row: Richie Little, Jimmy Newton, Martin Sammons, John Laird, Dick Sorrells, Robert Rohe, Dan Utterson, Tom McAvoy, Bob Secrest.
Second Row: Etta King, Jean Bennett, Marguerite Gloss, Darlene Rinkes, Coach Marion Locher, Manager Marion Adrian, Kay Granquist, Nancy Woolard, Pat McAvoy, Ruth Abbe.

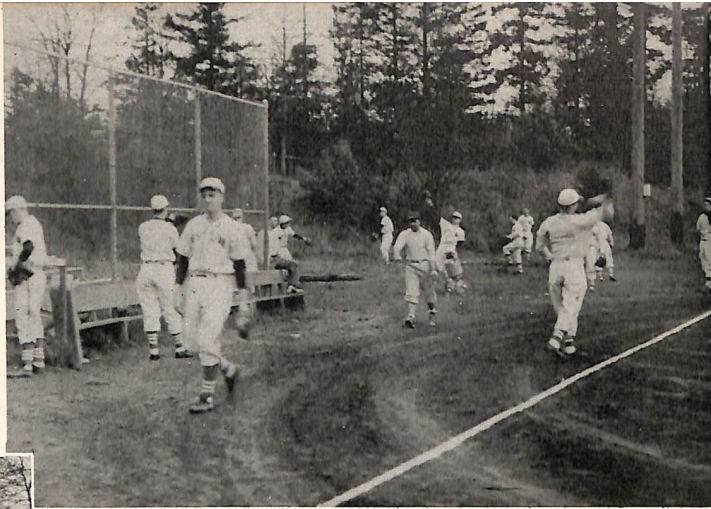
Splashers and Grapplers Complete Season

Coach Marion Locher's Lion SWIMMERS, especially the girls, enjoyed a very successful season. The mermaids, paced by Kay Granquist, swept to third place in the state swim tournament. The boys, led by captain Keith Renner, were not quite as successful but had a lot of fun, anyway.

Jack Tilton's Lion MATMEN had a building year this year, winning but two meets. The outlook is brighter for next year, however, with many returning lettermen, especially in the lower weights. Outstanding this year were Allen Arthur, Bill Illingworth, David Smith and Don Christensen. Allen and Bill won state tournament berths.

First Row: Dave Smith, Romaine Anderson, Wayne Coultas, Marvin Effinger, Malcolm Hinkle, Glen Ek, Bill Smith, Ed Hilton.
Second Row: Manager Dale Stisser, Martin Sammons, Herman McIntosh, Ray Gill, Bob Secrest, Branceford Davidson, Charles Oliver, Dick Smith, Coach Jack Tilton.
Third Row: Larry Young, Bill Illingworth, Allen Arthur, Ed Holland, John Roisum, Jim Dale, Don Christensen, Bill O'Neill, Buzz Haag.



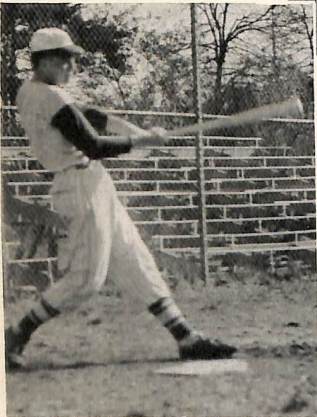


1952 Nine Takes

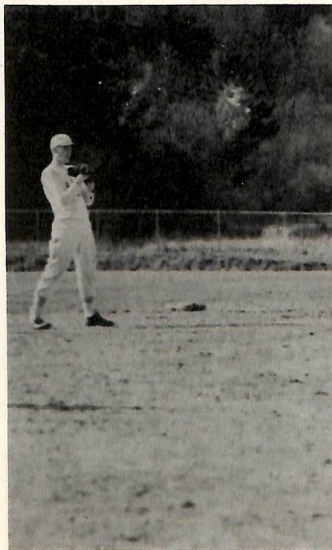
Last year's Baseball team turned out to be one of the best in all Coach John Paul Brown's 25 years at West Linn. They swept to the TYV League and District Championships, ending with a final record of 15 wins, four defeats. The season had many highlights,

TYV Championship-"

but one of the most outstanding was an 18 to 0 perfect game pitched by Bob Eisele against Hillsboro. Bobby ended with a nine win—two defeat record. Lee Wallace led the club in hitting with a .420 mark. Laurie Fitzpatrick hit .408.



Timber-r-r-r!

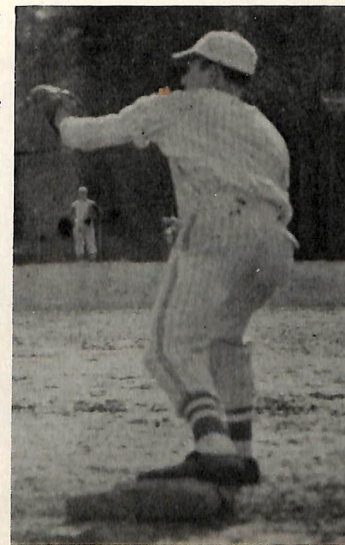


The Pitch

At Shortstop?



On the alert!



Out at second!



Practice makes perfect

Baseball Heads Spring Sports Parade



First Row: Batboy Dwight Catherwood, Jr., Cliff Davis, Laurie Fitzpatrick, Connie Kilmer, Jon Webster, Johnny Lane, Bob Eisele, Coach J. P. Brown.

Second Row: Manager Darrell Fischer, Don Adams, Don Rasmussen, Wayne Fitzpatrick, Frank Zaniker, John Parker, Gene Campynol, Bill McIntosh, Cliff Fahey, Jim Miller.

Tennis Attracts Many Enthusiasts

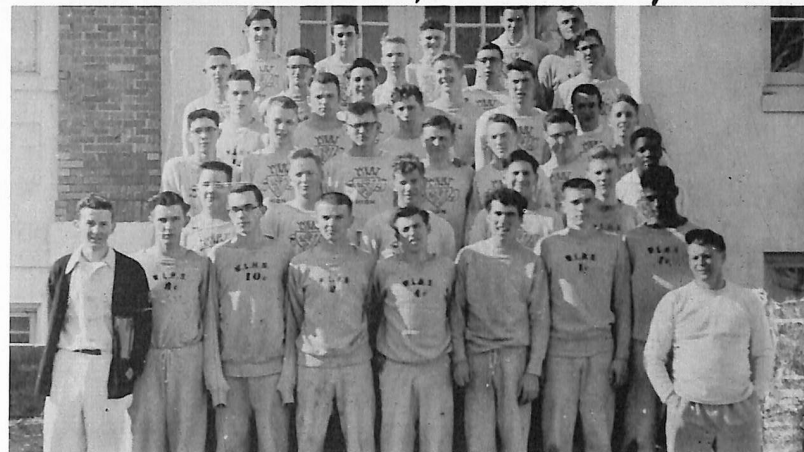


First Row: Darlene Rinkes, Margie Zeller, Neva Perkins, Marlene Pleinis, Shirlee Williams.

Second Row: Marguerite Gloss, Jackie Lavier, Barbara Rossman, Pat Mehren, Pat Sharp, Eunice Misterek.

Third Row: Tom Rouw, Martin Sammons, Ray Gill, Richie Little, Ed Stevens, Larry Haxton, Ed Hilton, Tom McAvoy, Gary Welter.

Cinder Season Gets into Swing



First Row: Manager Delbert Latham, Dave Goins, Marvin Mitchell, Henry Kilmer, Dick Gay, Allen Pynn, Ray Haag, Coach Jiggs Burnett.

Second Row: Buzz Haag, John Roisum, Keith Renner, Ted Wade, Mike Bucholz.

Third Row: Bob Gwynne, Mike Coover, Kurt Pedersen, Glen Ek, Branceford Davidson, Charles Oliver, Larry Kromling.

Fourth Row: Don Pendergraft, Bill Illingworth, Dick Smith, Mark Kaetterhenry, Ross Barber.

Fifth Row: LeRoy Wood, John Hooley, Ray McEwen, Jack Wills.

Sixth Row: Bob Chamberlain, Bill Borland, Arnie Schultz.

Seventh Row: Charley Goins, Wayne Coultas, Bob Se-crest, Jim Rlinger, Jack Myers.

Jayvee Nine Trains for Future Varsity Work



First Row: Don Eisele, Adrian Spande, Romaine Anderson, Bill Taylor, Ervin Riley, Chuck Lane.

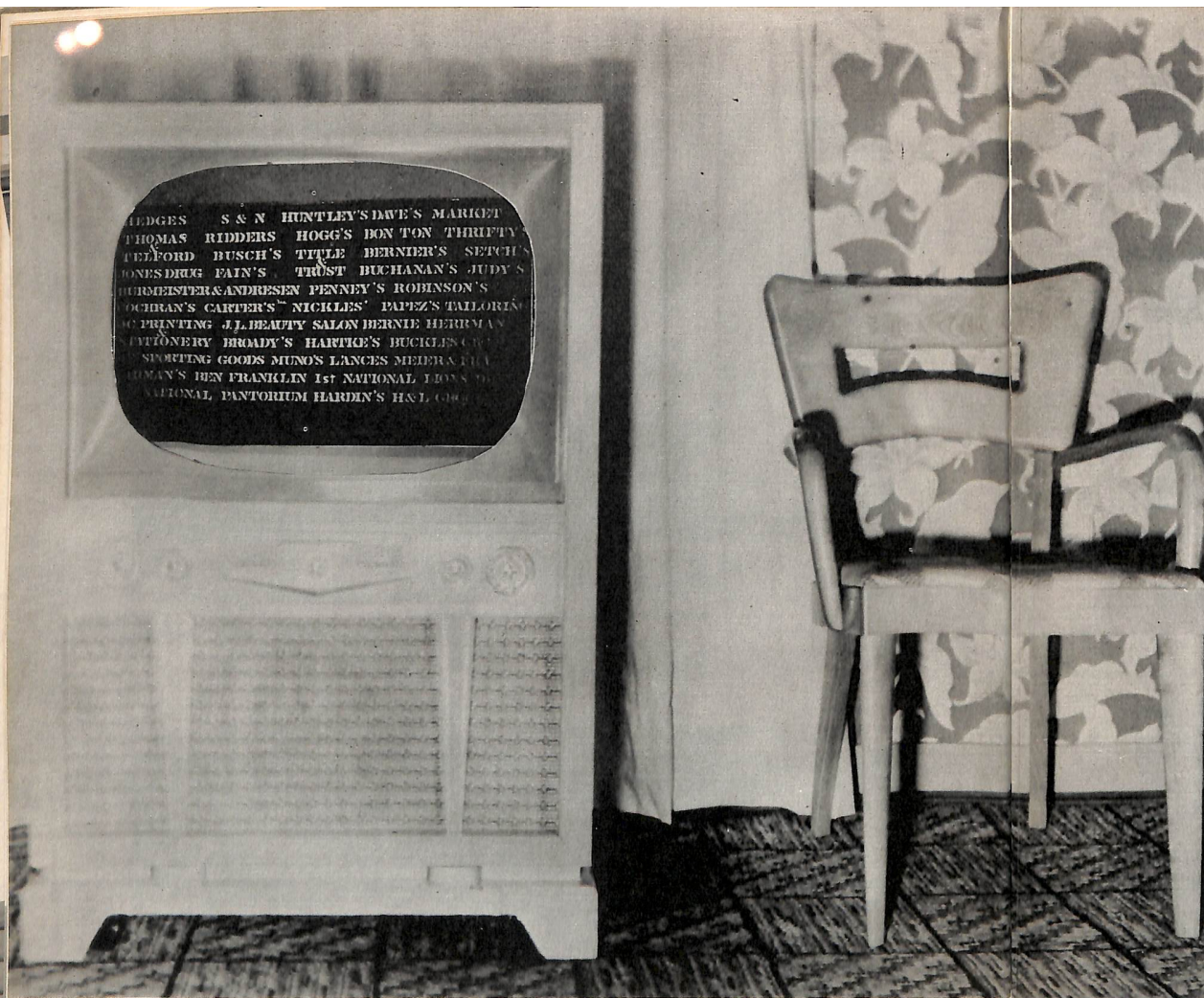
Second Row: Wayne Bauer, Charles Groff, Larry Young, Ray Parra, Wayne McDonald.

Third Row: Keith Blue, Bob Wanker, Jim Herrman.

Frank Oliver.

Fourth Row: Bob Phillips, Bob Jennings, Ed Holland, Ron Wilson, Mike Cipolla.

Fifth Row: Don Wilson, Herman McIntosh, Derald Lawrence, Jim Blanchette.



Let's Go Shopping

at these firms who made the previous T.V. programs possible.

Producer *Nancy Herrmann*

Make up *Nancy Herrmann*





BERNIE HERRMANN'S

"Home of
618 Main Street

Jantzen

Sweaters and Swimsuits"
Oregon City, Ore.

JOHN PAPEZ

"Your Oregon City Tailor"

618 Main Street
Phone 4454

HARDING DRUG CO.

Prescription Druggists
Phone 4121

511 Main St. Oregon City

"To Ben Igo for the
Best there is in printing."

**Oregon City Printing
and Stationery Co.**

Seals

Engraving

Legal Blanks

Office Supplies

Rubber Stamps

Typewriters

Adding Machines

School Supplies

Steel Files

219 7th Street
"Foot of Elevator"
Phone 3864

"Compliments to the Seniors"
from

**HUNTLEY---DRAPER
DRUG COMPANY**

"Always a Bigger Saving at Your
Rexall Store"

713 Main Street
Phone 4228

Seventh and Center
Phone 3822

G M C Trucks

Pontiac 6 and 8

"Bob" Hartke Pontiac

13th and Main
Oregon City

R. J. Hartke
SUNset 8207

Ph. Main Office 5226

THOMAS and TELFORD

Oregon Automobile Insurance Co.
Oregon Mutual Insurance Co.

Suite 1, McIntyre Bldg. — Phone 5455

Main Street

Oregon City



BURMEISTER & ANDRESEN

"Your Oregon City Jewelers"

Bridge Corner

Phone Oregon City 5253



Complete Line of
Ladies' Suits
Coats — Dresses
Lingerie — Sportswear — Accessories
"Headquarters for WHITE STAG Playtogs"

709 Main Street
Oregon City, Oregon

"Prescriptions filled as your doctor ordered"

JONES DRUG COMPANY

Fountain Lunch
Whitman's Candies

701 Main Street
Oregon City, Oregon

"Compliments to the Grads"
from

"Jimmy" Sullivan and "Mark" Sturges
of

O. C. SPORTING GOODS STORE

"Every Need of the Sportsman"

Corner of Seventh and Main Streets
Oregon City, Oregon

"Clackamas County's Finest Men's Store"

S and N's Men's Store

Main Street
Oregon City, Oregon

"Fine Quality—Pieces You Can Afford"
at

Robinson's Jewelry Store

"We give S and H Green Stamps"

HEADQUARTERS FOR

DIAMONDS WATCHES
JEWELRY GIFTS

610 Main Street
Oregon City, Oregon

"THE DEPARTMENT STORE
FOR ALL
MEMBERS OF THE FAMILY"



Phone 3392
622-24 Main Street
Oregon City, Oregon

HEDGES'

5c 10c 25c STORE

HOUSEWARES
STATIONERY
NOTIONS
GIFTS
TOYS

513 Main Oregon City, Oregon



"Compliments" of

FAIN'S

Men's and Boy's Wear

"The home of friendly credit"

523 Main Street Phone 3821
Oregon City, Oregon

Compliments of

Nickles'

**BUSTER BROWN
SHOE STORE**

MAIN AT EIGHTH OREGON CITY

OREGON CITY'S COMPLETE
VARIETY STORE

Ben Franklin Store

5 - 10 - 25

"Shop here for all your variety needs"

Main Street Oregon City, Oregon

**Hi Neighbor
BARBER SHOP**

"We Specialize in Men's and Ladies'
Hair Cutting"

Main Street Oregon City, Oregon

Compliments of

BERNIERS FLOWERS

"Jack and Dorris Coleman"

812½ Main Street Phone 3942
Oregon City, Oregon

"Congratulations"

PENNEY'S
ALWAYS FIRST QUALITY!

PHONE 4289

612 Main Street Oregon City, Ore.

**BUSCH
Furniture Co.**

"A Good Place to Trade"
SINCE 1885
Oregon City, Oregon

"Compliments"
of

RIDDER'S

"In business for more than 32 years"

Phone O.C. 6585
Willamette, Oregon

"Congratulations to the Class of '53
from

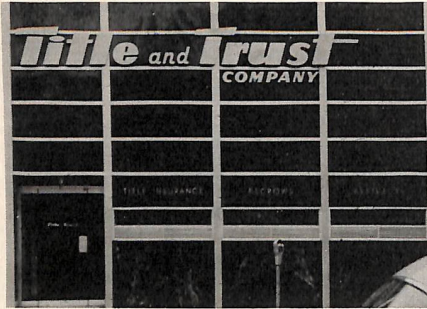
Muno's Bakery

Main Street Oregon City, Oregon

Carter's, Inc.
VARIETY

"Your Complete School Needs"

613 Main Street
Oregon City, Oregon



TITLE & TRUST CO.
Clackamas County Branch

820 Main Street
Oregon City, Oregon

Congratulations to the
Class of '53

Oregon City Branch

**THE UNITED STATES
NATIONAL BANK**

of Portland, Oregon

An Oregon Bank serving Oregon

"Here's to a
Clean Cut Future"
"Setch" Boisjolie

Setch's Barber Shop

Willamette, Oregon

Dave's Market

Pleasant Courteous Service

Willamette

Phone Oregon City 5454

Compliments
of
Production Surveys, Inc.
Oregon City
Clint Mansfield, President
—:—
Publishers of
"A Manifest of Western Oregon"
—:—
Now in Production
"A Manifest of
the Pacific Northwest"

LION'S DEN

Across from West Linn High School

Ice Cream — Soft Drinks
Cold and Hot Sandwiches
Chili

Operated by Mrs. I. J. Lavier

"Cleanest Rest Rooms in Oregon"

JUDY'S RICHFIELD SERVICE

Pick Up & Delivery S&H Green Stamps

Highway 99E at Jennings Lodge
Jennings Lodge, Oregon

Phone EVergreen 1-9127

Jennings Avenue Beauty Shop

All types of Beauty Work

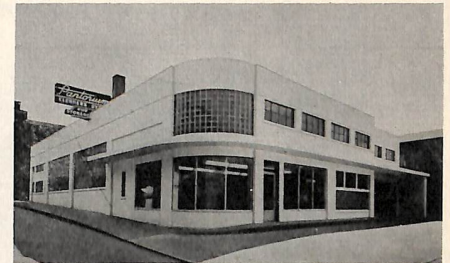
Merle Norman Cosmetics

Crystal McCoy Jennings Lodge, Ore.
Phone EVergreen 12949

Compliments of

PANTORIUM CLEANERS

624 McLaughlin Blvd. Beside Bridge



Fur Storage
Furs Cleaned and Glazed
Furrier's Method

Pick up and Delivery Service

Phone 4213

"Everyday Low Prices at

THRIFTWAY MARKET

Les De Jardin

West Linn, Oregon

"To really appreciate why more people buy Chevrol-
lets and Buicks in their respective price class than
any other car, you must drive them."

ASK FOR A DEMONSTRATION

Jarman's

12th and Main Streets Oregon City, Oregon

PHONE 4223

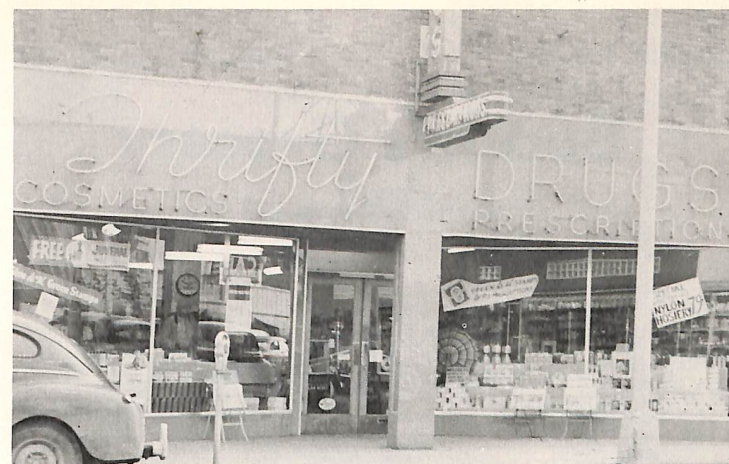
1st
FIRST NATIONAL BANK
OREGON CITY BRANCH
OF PORTLAND

The Bank that stays open 10 to 5 six days a week for your convenience

"Let's Build Oregon Together"

Member Federal Insurance Corporation

Meier & Frank Co.
FIFTH, SIXTH, MORRISON AND ALDER • • • Broadway 4411
PORTLAND'S OWN STORE



T. Robnett

S. Brooks

THRIFTY DRUGS

716 Main Street

Oregon City 4447

Congratulations to the
Class of '53
from

The Long Hot Dog Stand

Jennings Lodge
Oregon

Compliments of

Crown Zellerbach, Corp.

West Linn
Oregon

Buckle's Grocery

"Staple and Fancy Goods"

TWO STORES

Oregon City
Phone 5115

Willamette
Phone 6165

GLADSTONE PHARMACY

Ernest E. Yeo, Phm. B.
Gladstone, Ore.
Phone 7533

Compliments of

T. H. Thorpe Merle Aden

Thorpe's Mens Shop

Phone 4646 Main Street at Eighth
Oregon City, Oregon

"The Complete Shopping Center"

H and L MARKET



"Your I. G. A. Store"

Phone Evergreen 1-9135
Super Hiway at Jennings Lodge

Buchanan's Grocery

Jennings Lodge

Oregon

Broady's Toiletries

Jennings Lodge

Oregon

Index

A

ABBE, Nadine 47, 57
ABBE, Patricia 57
ABBE, Ruth 44, 57, 59, 64, 65, 81
ADAMS, Anita 47, 54, 59, 64, 68, 69
ADAMS, Donald 33, 65
ADAMS, Ramona 50, 67
ADRIAN, Marion 33, 63, 66, 81
ALEX, Beverly 33, 68, 69
ALLINSON, Donna 50, 67
ALLINSON, Jo Anne 47, 64
ANDERSON, Beverly 50
ANDERSON, Charles 50, 81
ANDERSON, Dolores 44
ANDERSON, Patricia 47, 54, 57
ARMSTRONG, Mary 50
ARTHUR, Allen 15, 16, 26, 44, 56, 62, 81

B

BAGLEY, Kernan 16, 44, 72, 73, 76
BAILEY, Darlene 50
BAKER, Alyce 33, 58, 60, 61
BAKER, Delbert 50
BAKER, Jean 47, 54, 57, 59, 64, 68
BARBER, Ross 65
BAUER, Claudia 50
BAUER, Janet 16, 33, 55, 56, 57, 66, 67, 69
BAUER, Wayne 47
BEAN, Janice 16, 50
BEISELL, Tom
BENNETT, Susan 47, 57, 68, 81
BERNERT, Mary Ann 47
BERQUIST, Quentin 33, 73
BERNING, Caroline 47
BETTS, Carolyn 47, 67
BETTS, Marianne
BIRTCHET, Hubert 59
BLANCHETTE, James 47, 76
BLATTMAN, Janet 47, 68
BLIESE, Bruce 50
BLINKHORN, Helen 17, 18, 26, 27, 33, 56, 57, 63
BLINKHORN, Mary 47
BLOOM, Dwayne 44, 54
BLUE, Keith 17, 26, 46, 47, 56, 59, 64, 65, 68, 80
BOISJOLIE, David 44
BORLAND, Dora 47

BORLAND, William 47
BOYD, Robert 44, 59
BRADLEY, Sandra 47, 60, 68
BRADSHAW, Frank 47, 65
BRADSHAW, Opal 15, 26, 33, 57, 61, 63
BROOKS, Arlene 47, 61
BROOKS, Kathleen 47
BROOKS, Marlene 33
BROYLES, Dee 44, 68
BRUCK, Delma
BRUCK, Marjorie 44, 47
BUCHOLZ, Michael 47, 68, 80
BEISWANGER, Caroline

C

CALZADA, Catherine 33, 56, 57, 63, 68
CALZADA, Sam 47
CAMPYNOL, Vernon 44, 76, 80
CARR, Karen 47, 68
CARTER, Janice 16, 46, 47, 55, 57, 59, 64, 68, 69
CHAMBERLAIN, Robert 47, 68, 69
CHAPMAN, Dave 33, 60, 62, 73
CHARMAN, Charles 47, 54, 68, 69, 17
CHILDRETH, Shirley 34, 57
CHRISTENSEN, Don 34, 59, 60, 62, 64, 73, 81
CHRISTENSEN, Jerry 50, 76
CHUBB, Bettie 34, 59, 64
CIPOLLA, Michael 50, 80
CLARK, Donald 47
COE, Sue 44, 57, 59, 64, 65, 17
COOKMAN, Fred 47
COOVER, Michael 50, 59, 64
COREY, Carol 50, 68
COREY, Eugene 16, 44, 55, 58, 62, 68, 69
COULTAS, Harry 34, 81
COULTAS, Wayne 50, 76
COURVILLE, Clara 44
COX, Maurita 50
CUMBERLAND, Glenda 47
CUMMINGS, Sharon 50
CLIFFORD, Leo

D

DALE, James 44, 81
DAVENPORT, Gladys
DAVENPORT, Louise 34, 50, 57, 58
DAVIDSON, Branceford 47, 73, 76, 81

DAVIS, Clifford 34, 60, 73
DAVIS, Duane 50, 59, 76
DAVIS, Jean 50
DAVIS, Mary Lou 44
DINEEN, Robert
DODGE, Marilyn 44, 55, 56, 57, 68
DREIER, Farrel 47, 67
DUKE, Clarence 44, 65, 73, 76, 80
DUNMIRE, Gary

E

EASTMAN, Virginia 54, 56, 57, 60
ECKERT, Betty 44, 56, 64
ECKERT, Beverly 47, 64
EFFINGER, Lucille 57, 68
EFFINGER, Marvin 81
EISELE, Bob 26, 32, 34, 60, 66, 77, 79
EISELE, Don 26, 49, 50, 76, 77, 79, 80
EK, Glen 44, 59, 60, 64, 81
ENGEL, Barbara 50, 68, 69
ENGELMAN, Larry 50, 80
ENGLER, Rudeen 34, 57

F

FAHEY, Clifford 47, 60, 73, 76, 80
FELLOWS, Ethel 50
FERGUS, Darwin 47
FINCH, Virginia 44
FISCHER, Darrell 34, 56, 59, 60, 65
FISCHER, Merlin 47, 59, 68
FISH, Ginger 35
FITZJOHN, Joyce 50
FITZPATRICK, Lawrence 17, 18, 35, 59, 60, 62, 64, 73, 77, 78
FITZPATRICK, Wayne 35, 44, 59, 64, 73
FLATH, Bernell 15, 17, 44, 54, 56
FORD, Vernon 44, 59, 67
FOX, Shirley 19, 26, 35, 57, 61, 63, 72
FRITCHIE, Yvonne 44, 57, 68, 69

G

GAFFEY, Roger 44, 56, 62, 65
GAY, Dick 19, 35, 60, 66, 73, 77, 79
GAY, Sally 50, 67
GILES, Jimmy 50, 68, 69
GILES, Lorraine 50, 69
GLEASON, Bill 47, 73
GLOSS, Marguerite 47, 81
GOINS, Charles 50, 59, 76, 80

GOINS, David 44, 62, 73
GORDON, Leslie 47
GOULD, Sylvia 50, 67
GRADY, Carolynne 47
GRANQUIST, Jerald
GRANQUIST, Kay 17, 32, 35, 56, 61, 66, 81
GRIESEN, Fred 44, 65
GROFF, Charles 50, 76, 80
GROFF, Hershall 44
GRONER, Robert 50
GROSS, Betty 65
GUYTON, Elizabeth 35, 57
GWYNNE, Robert 50

H

HAAG, Henry 50, 69, 76, 80
HAAG, Ray 18, 26, 32, 35, 56, 60, 62, 73, 77, 79
HALBACH, Janice 47
HALBACK, Beverly 35, 63
HALE, Marilyn 44, 55, 57, 63, 68, 69
HALL, James 50
HAMNES, Dorine 47, 57, 67
HAMNES, Dorothy 44, 57, 64
HARREL, Leroy 47
HAXTON, Gene 44
HAXTON, Larry
HAYNES, Dorothy 68
HAYS, Margie 44, 57, 64
HEFENIEDER, Phyllis 44, 63
HEIN, Marjorie 47
HELLBERG, Shirley 44, 57, 63, 64
HEPPNER, Esther 35
HEPPNER, Joanne 50
HERING, Bill 50, 59
HERING, Virginia 50
HERRMANN, Jim 50, 80, 76
HERRMANN, Nancy 36, 58, 60, 61
HICKMAN, Sharon 50
HILTON, Edward 44, 81
HINKLE, Malcolm 44, 60, 81
HOFFMAN, Sharon 47, 57, 59, 64
HOLLAND, Edward 47, 68, 73, 76, 81
HOLLAND, Nancy 50
HOLMGREN, Betty 36, 55, 63, 66, 69
HOOLEY, John 49, 50, 76, 80
HOUSE, Robert 47

I

ILLINGWORTH, Bill 15, 73, 81
IRISH, Peter 50

J

JACOBS, Gerald 50
JACOBSEN, Geraldine
JAEGER, Don 47, 59, 65
JAEGER Fred 44, 59, 64
JENNINGS, Genevieve 73
JENNINGS, Robert 47, 59, 64, 76, 80
JOHNSON, Ronald 36
JONES, Phillip 48, 68

K

KAETTERHENRY, Mark 67, 80
KESTEK, Mildred 47, 57
KIDD, Donna 36, 68
KILMER, Conrad 19, 36, 62, 73, 77, 78
KILMER, Henry 19, 26, 27, 36, 56, 60, 62, 65
KING, Eta 36, 54, 56, 57, 81
KLINGER, James 44, 60, 67
KLOER, Robert 50
KNICKREHM, Nancy 44, 58
KOELLERMEIER, Raymond 50
KROLL, Anne 47, 57
KROMLING, Larry 15, 16, 19, 26, 36, 54, 56, 62, 72
KUNZ, Henry 47, 59
KUNZ, Robert 44, 68
KUNZMAN, Annalee 47, 57, 64
KUTCH, Donna 47

L

LACKEY, Carol 50
LAIRD, John 47, 59, 81
LAMKE, Eugene 36, 65
LANE, Bonnie 37
LANE, Charles 47, 67
LANE, John 37, 60, 73
LARSEN, Jean 50
LATHAM, Delbert 44, 59, 60, 64
LAURENCE, Derald 50, 76
LAVIER, Jacqueline 47
LAWTON, Dianne 50
LEETE, Donna 47
LIENDE, Russell 47, 68
LIEN, Janet 37, 56, 60, 65
LITTLE, Richard 47, 59, 64, 81
LOGSDON, Jerry 48, 59
LOHMAN, Eddie 44, 77, 79
LONG, Chester 44, 59
LONG, Mike 48, 59, 65
LONG, Pamela 50
LUNDGREN, Bruce 37
LUSCHER, Rosalie 51

M

MAIN, Leah 44, 57, 59, 60, 61, 64
MALIN, Elwood
MANNING, Shirley 37, 57
MANSFIELD, Jackie 50, 68
MARTIN, James 50, 68, 69
MARTIN, Joyce 44, 57, 58, 60, 68
McAVOY, Pat 44, 54, 56, 63, 81
McAVOY, Tom 48, 59, 60, 64, 81
McCOY, Barbara 48, 54, 55, 68, 69
McDONALD, Wayne 48, 59, 64, 73, 76, 80
McEWEN, Ray 48
McHONE, James 37
McHONE, Jennie 37
McILRATH, Maureen 15, 37, 56, 63, 65
McINTOSH, Bill 16, 48, 60, 73, 80
McINTOSH, Herman 50, 76, 81
McLARTY, Donna 45

McLARTY, Sally 48, 68
McNICHOLAS, Martin 37, 65
MEADOR, Nadine 17, 18, 26, 38, 56, 57, 58 61, 63, 66
MEHLBRECH, Donna 48, 57
MEHLBRECH, John 48, 67
MEHREN, Patricia 69, 58, 45, 57, 60
MILLER, Carl 50, 68, 80
MILLER, Carlotta 50
MILLER, James 68, 55
MILLIKEN, Patricia 17, 38, 69, 68, 56, 63, 55, 54, 57
MILLS, Maureen
MISKA, Gloria 38, 68, 64, 59, 57
MISTEREK, Eunice 66, 56, 63, 45, 54, 57
MISTEREK, Verna 48, 66
MITCHELL, Marvin 26, 38, 62, 65, 56, 60, 61, 73
MOEHNKE, Dorothy 68, 48
MOEHNKE, Weslyn 45
MOLANDER, Kay 55, 54, 57
MOLES, Dean
MOLES, Janice 67, 64, 48
MOORE, Madelene 51, 67
MOORE, Milo 67, 51
MORGAN, Darrel 45
MORRIS Charles 38, 69, 68, 55
MOSER, Betty 64, 57
MOSER, Frances 26, 64, 65, 45, 57
MOSER, Helen 48
MULKEY, Roselyn
MYERS, Betty 48, 68
MYERS, Jack 64, 59, 45, 60, 73, 79, 77
MASH, Billie 38, 64, 59

N

NELSON, Jack 38, 64, 59
NEWTON, Jerry 48, 76
NEWTON, Jim 81
NORMAN, Gary 59, 48
NORMAN, Janice 51
NUNN, Anita 64, 59, 46, 48

O

O'CONNOR, John 60
OLDENSTADT, Donna 45, 64, 68
OLDENSTADT, Vicki 51, 57, 68
OLIVER, Charles 48, 65, 73, 81
OLIVER, Frank 48
OLIVER, Richard 18, 38
O'NEILL, Bill 17, 38, 68, 60, 73, 81, 76
O'NEILL, Patty 48
OPPENLANDER, Paul 15, 20, 39, 62, 65, 56, 62
OSTER, Janice 67, 64, 48
OSWALT, Joan 51
OTT, Dolores 64, 59, 48

P

PAPEZ, Dorothy 49, 51
PAPEZ, Ronnie 39, 58, 60, 61
PARKER, John 45, 77, 79

PARRA, Raymond 68, 46, 48, 73, 80, 76
PEDERSON, Kurt 68, 59, 48
PEDERSON, Thelma 51, 67
PENDERGRAFT, Donald 45
PERKINS, Neva 18, 39, 57
PETIT, Marilyn 45, 57, 58
PETRICH, George 48, 59
PHILLIPS, Robert 48
PILAND, Barbara 48, 64
PITTS, Phyllis 64
PLAMBECK, Mary 45
PLEINIS, Marlene 18, 39, 55, 56, 51 69
PLEINIS, Marvin 48
POLZEN, Mary 51, 66
PUCKETT, Bernice 51
PYNN, Allen 39, 54, 58, 59, 60

Q

QUINN, Clara Ann 45
QUINT, Alice 51

R

RABICK, Phillip 51, 68
RAGEL, Robert 51, 80
RAND, Darlene 51
RASMUSSEN, Don 39, 66, 73, 77, 78, 17, 19
RASMUSSEN, Sharon 51, 67
RAY, James 39
REED, Dale
REES, Marilyn 45, 63, 65
REEVES, Richard 51
REILLY, Dale 51
RENNER, Keith 45, 59, 60, 62, 64
REYNOLDS, Dorothy 51, 69
REYNOLDS, Harold 76
REYNOLDS, Howard 51, 59
RHODES, William 39, 56, 65
RILEY, Ervin 51, 80, 76
RINKES, Darlene 48, 56, 69, 81
RINKES, Joe 59, 76
RINKES, John 45, 68, 73
ROBNETT, Jannice 51
ROHE, Robert 48, 68, 81
ROISUM, John 51, 73, 81, 76
ROLAND, Robert 51
ROSS, Patricia 45, 55, 57, 58, 68
ROSSMAN, Barbara 45, 56, 57, 59, 63, 64
RUHL, Dorothy 48
RUSSELL, Robert 45, 58
RYAN, Carol 45, 57, 58
RYAN, Drew 48, 49, 80
RYAN, Lloyd 51, 67, 77
RYSER, Judy 51, 67

S

SAMMONS, Martin 47, 59, 81
SANISTER, Carol 51

SARC, Dorreen 51
SARC, Shirley 48, 57, 64, 68
SATHER, Betty 39, 63
SATHER, Wanda 48
SATTTLER, Henrietta 51
SAXHAUG, Barbara 16, 45, 55, 69, 72
SCHMEER, Brenda 51
SCHNELLE, EeVern 45
SCHNELLE, Cecilia 51, 67
SCHROEDER Barbara 45, 57, 59, 64, 68
SCHULDT, Arnold 48
SCHWARTZ, Jack 45, 56, 60, 61
SECRET, Robert 48, 81
SEELY, Elsie 40
SEELY, Ruth 51
SEIDA, Larry 48
SHAFFER, Margaret 51, 68
SHARBUNO, Donna 16, 48, 54, 57, 59, 64, 72
SHARP, Jeanette 40
SHARP, Pat 45, 54, 56, 57, 59, 63, 64, 17
SHERLUND, Delores 19, 32, 40, 56, 63
SHIPLEY, Jean 48, 57, 59, 64
SHOCKLEY, Carolyn 48, 54, 68, 69
SHOCKLEY, Nancy
SHUELL, Lorraine 51, 69
SHUELL, Rose 45, 57, 69
SIEVERS, Jacquelyn 45, 57, 58, 68
SIMANTEL, Richard 48, 59
SKILL, Scarlet 48
SMITH, Betty 48, 67
SMITH, David 45, 81
SMITH, Dick 40, 73, 81
SMITH, Eunice 48, 51
SMITH, Herbert 40, 65
SMITH, Jacquelyn 45, 64
SMITH, Nancy 45, 55, 57, 58, 65, 68
SMITH, William 40, 60, 65, 73, 81
SOMERVILLE, Melvin 45
SORRELS, Richard 48, 58, 60, 81
SPANDE, Adrian 48, 59, 64, 65, 68, 69
SPAULDING, Fern 40, 64
SPENCER, Bonnie 45, 57, 58
SPRAGUE, Lyle 48
STEELE, Carl 40
STEELE, Perry 51
STEVENS, Edward 51, 80
STEWART, Darlene 40, 57
STEWART, Glaya 48
STEWART, Kenneth 49, 51
STEWART, Robert 48
STISSER, Dale 51, 81
STISSER, Leah 45, 57, 58, 68
STISSER, Shirley 41, 68
STOAKS, Jean 48
SWEENEY, Tom 48

T

TAPFER, Robert 45
TAUSCHER, Marilyn 45
TAYLOR, William 51

THORPE, Bill 80
TUNNELL, Peggy 68
TURNER, Rex 51

U

UMBER, Erma 51
UTTERSON, Daniel 48, 81

V

VanHOVE, Donna 45, 67
VanWINKLE, Jerome 51, 68

W

WADE, Judith 48
WADE, Ted 41, 60, 72
WAGNER, Diane 51
WALLACE, Barbara 48, 68
WALLACE, Lucille 48
WALTERS, Doris 41, 57
WALTERS, Riley 51
WANKER, Robert 51, 80, 76
WARNKE, Larry
WARREN, Dorothy
WARREN, Kay 51, 67
WEBSTER, Jon 26, 27, 41, 60, 77, 78, 18
WELLS, Colleen 51
WELTER, Gary 16, 48, 59, 64, 72
WEST, James 41, 65
WETZEL, Carma 45, 57, 64
WETZEL, Laura 51, 64
WHEELER, Don 48, 67
WHITAKER, David 51, 80
WHITE, Richard 48
WHITTINGTON, Gary 41
WIDMER, Beverly 51
WIEDEMANN, Linda 51, 68
WILKEN, Gary
WILLIAMS, Geraldine 16, 45, 57, 65
WILLIAMS, Shirley 41, 56, 57, 63, 72, 19
WILLS, Jack 48, 59, 68, 73, 80
WILSON, Don 51, 80, 76
WILSON, Ron 51, 59, 76
WINER, Lee 51, 76
WINSLOW, William 45
WOHL, Nancy 51
WOLTER, Janet 51, 68, 69
WOOD, Betty 51
WOOD, Owen 51, 76
WOODWARD, Orman 45
WOODLAND, Nancy 51, 81
WRIGHT, Jack 59, 64

Y

YOUNG, Larry 51, 76, 81

Z

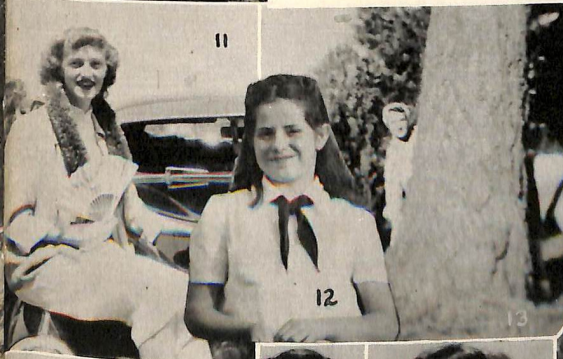
ZANIKER, Frank 45, 73, 77, 78
ZELLER, Marjorie 41, 57, 67, 19
ZELLER, Shirley 41
ZELLER, Thrumen 45
ZIRBEL, Sharon 26, 27, 41, 56, 57, 63



1. Digger O'Dell and friends
2. Janet Bauer
3. The "brain on the beach"
4. Is this Denmark?
5. The gang
6. Sun babies
7. Night owls
8. Carma Wetzel
9. Cuddle up a little closer
10. Dick and Sally minus a fish
11. This fisherman caught two
12. Shirley and Merle
13. Look at those "Sharp" legs!
14. Down by the "ole swimmin' hole"
15. Posing
16. Smarting off
17. Goin steady
18. The twins, Jennie and Jim
19. "Please don't take my picture"!
20. The end!



1. Noon hour bench warmers.
2. "Night Must Fall"
3. Truman Zeller
4. Margie
5. Dorothy Papez
6. Hold it please.
7. It's really sodapop !
8. Marilyn Petit
9. It won't blow darn it.
10. Old buddies
11. Straight from Hawaii
12. Cute kid that Gerry
13. Long stretch
14. One horse power
15. Look of innocence?
16. Say "cheese"
17. Caroline Berning
18. Pattie Miliken
19. Fiddlers
20. Jean Shipley
21. Leaning post.
22. Every one gets in the act.
23. Sharie Zirbel
24. Paris creation Bev?
25. Jan and Pat flexing those muscles.



Our Alma Mater Song

High upon a hill so noble, challenging the eye,
Stands a school above all others, stands the West Linn High.
West Linn High to thee we shall be ever loyal and bold,
Striving always to do service for the green and gold.

When our high school days are over and we're scattered wide,
We'll revere the name of West Linn, speak of her with pride.
West Linn High to thee we shall be ever loyal and bold,
Striving always to do service for the green and gold.

To a swell guy
I've grown for
many years
Donald E. Fisher

Dear Buggy
Good luck to a
naughty boy that always
pecks
Marifon I want

to a swell
guy
Del Baker

Dear Henry
You're the sweetest
boy I know. and
next year I'll put
the nest in

Pete Irish
your classmate

Dear Buggy,
You're a good
kid and I hope
you stay that way.
Have fun this summer.
Cecilia Schnell

I hope you have
a nice summer &
come back next
year.
Pete Irish

[Faint handwritten notes, possibly bleed-through from the reverse side.]